

Adenosine A2a Receptor antibody

Cat. No. GTX54923

| | |
|---------------------|-------------------|
| Host | Rabbit |
| Clonality | Polyclonal |
| Isotype | IgG |
| Applications | WB, ICC/IF |
| Reactivity | Human, Mouse, Rat |

Package
100 µl

Applications

Application Note

*Optimal dilutions/concentrations should be determined by the researcher.

| Suggested dilution | Recommended dilution |
|--------------------|----------------------|
| WB | 1:500 - 1:1000 |
| ICC/IF | 1:100 - 1:500 |

Not tested in other applications.

Calculated MW 45 kDa. ([Note](#))

Properties

| | |
|----------------------|--|
| Form | Liquid |
| Buffer | 0.42% Potassium Phosphate, 0.87% NaCl, 30% Glycerol |
| Preservative | 0.01% Sodium azide |
| Storage | Store as concentrated solution. Centrifuge briefly prior to opening vial. For short-term storage (1-2 weeks), store at 4°C. For long-term storage, aliquot and store at -20°C or below. Avoid multiple freeze-thaw cycles. |
| Concentration | Batch dependent (Please refer to the vial label for the specific concentration.) |
| Immunogen | KLH-conjugated synthetic peptide encompassing a sequence within the center region of Adenosine A2a Receptor. The exact sequence is proprietary. |
| Purification | Purified by antigen-affinity chromatography |
| Conjugation | Unconjugated |

Note

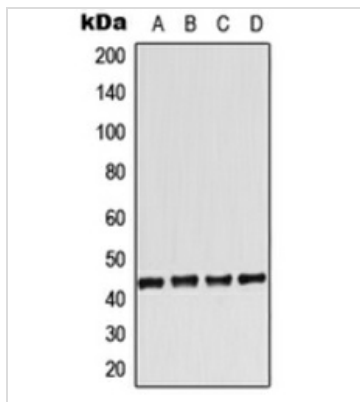
For laboratory research use only. Not for any clinical, therapeutic, or diagnostic use in humans or animals. Not for animal or human consumption.

Purchasers shall not, and agree not to enable third parties to, analyze, copy, reverse engineer or otherwise attempt to determine the structure or sequence of the product.



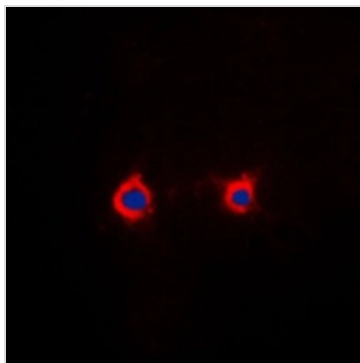
For full product information, images and publications, please visit our [website](#).

DATA IMAGES



GTx54923 WB Image

WB analysis of HeLa (A), Raw264.7 (B), H9C2 (C), rat kidney (D) whole cell lysates using GTx54923 Adenosine A2a Receptor antibody.



GTx54923 ICC/IF Image

ICC/IF analysis of formalin-fixed Raw264.7 cells using GTx54923 Adenosine A2a Receptor antibody.

Red : Primary antibody

Blue : DAPI

Permeabilization : 0.1% Triton X-100 in TBS for 5-10 minutes



For full product information, images and publications, please visit our [website](https://www.genetex.com).