

# alpha Synuclein (phospho Ser129) antibody

**Cat. No. GTX54991**

<b>Host</b>	Rabbit
<b>Clonality</b>	Polyclonal
<b>Isotype</b>	IgG
<b>Applications</b>	WB, ICC/IF, IHC-P, IHC-Fr
<b>Reactivity</b>	Human, Mouse, Rat

References ( 5 )

Package

100 µl

## Applications

### Application Note

\*Optimal dilutions/concentrations should be determined by the researcher.

Suggested dilution	Recommended dilution
WB	1:500 - 1:1000
ICC/IF	1:100 - 1:500
IHC-P	1:100 - 1:200
IHC-Fr	Assay dependent

Not tested in other applications.

**Calculated MW** 14 kDa. ( [Note](#) )

## Properties

<b>Form</b>	Liquid
<b>Buffer</b>	0.42% Potassium Phosphate, 0.87% NaCl, 30% Glycerol
<b>Preservative</b>	0.01% Sodium azide
<b>Storage</b>	Store as concentrated solution. Centrifuge briefly prior to opening vial. For short-term storage (1-2 weeks), store at 4°C. For long-term storage, aliquot and store at -20°C or below. Avoid multiple freeze-thaw cycles.
<b>Concentration</b>	Batch dependent (Please refer to the vial label for the specific concentration.)
<b>Immunogen</b>	KLH-conjugated synthetic peptide encompassing a sequence within the C-term region of alpha Synuclein. The exact sequence is proprietary.
<b>Purification</b>	Purified by antigen-affinity chromatography
<b>Conjugation</b>	Unconjugated



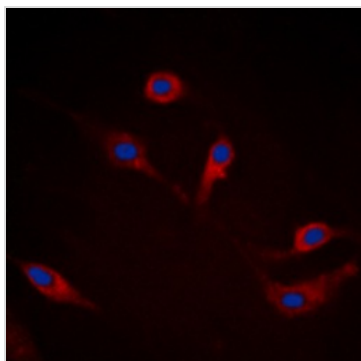
For full product information, images and publications, please visit our [website](#).

For laboratory research use only. Not for any clinical, therapeutic, or diagnostic use in humans or animals. Not for animal or human consumption.

## Note

Purchasers shall not, and agree not to enable third parties to, analyze, copy, reverse engineer or otherwise attempt to determine the structure or sequence of the product.

## DATA IMAGES



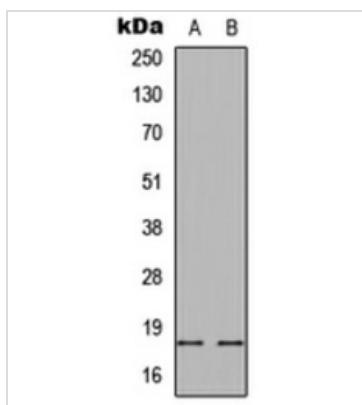
### GTX54991 ICC/IF Image

ICC/IF analysis of formalin-fixed HEK293T cells using GTX54991 alpha Synuclein (phospho Ser129) antibody.

Red : Primary antibody

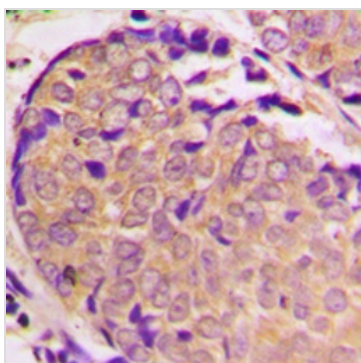
Blue : DAPI

Permeabilization : 0.1% Triton X-100 in TBS for 5-10 minutes



### GTX54991 WB Image

WB analysis of HEK293T (A), mouse brain (B) whole cell lysates using GTX54991 alpha Synuclein (phospho Ser129) antibody.



### GTX54991 IHC-P Image

IHC-P analysis of formalin fixed human prostate cancer tissue section using GTX54991 alpha Synuclein (phospho Ser129) antibody.

Antigen retrieval : Heat mediated antigen retrieval with sodium citrate buffer (pH 6.0)



For full product information, images and publications, please visit our [website](https://www.genetex.com).