

## IGF1R beta (phospho Tyr1131) / Insulin Receptor beta (phospho Tyr1146) antibody

Cat. No. GTX55013

Host	Rabbit
Clonality	Polyclonal
Isotype	IgG
Applications	WB, ICC/IF, IHC-P
Reactivity	Human

## Package

100 µl

## Applications

## Application Note

\*Optimal dilutions/concentrations should be determined by the researcher.

Suggested dilution	Recommended dilution
WB	1:500 - 1:1000
ICC/IF	1:100 - 1:500
IHC-P	1:100 - 1:200

Not tested in other applications.

**Calculated MW** 155 kDa. ([Note](#))

**Product Note** Tyr1161 in full-length IGF-1R is equivalent to Tyr1131 in signal peptide cleaved IGF1R, and Tyr1185 in full-length Insulin Receptor is equivalent to Tyr1146 in signal peptide cleaved Insulin Receptor.

## Properties

Form	Liquid
Buffer	0.42% Potassium Phosphate, 0.87% NaCl, 30% Glycerol
Preservative	0.01% Sodium azide
Storage	Store as concentrated solution. Centrifuge briefly prior to opening vial. For short-term storage (1-2 weeks), store at 4°C. For long-term storage, aliquot and store at -20°C or below. Avoid multiple freeze-thaw cycles.
Concentration	Batch dependent (Please refer to the vial label for the specific concentration.)
Immunogen	KLH-conjugated synthetic peptide encompassing a sequence within the C-term region of IGF1R. The exact sequence is proprietary.
Purification	Purified by antigen-affinity chromatography
Conjugation	Unconjugated

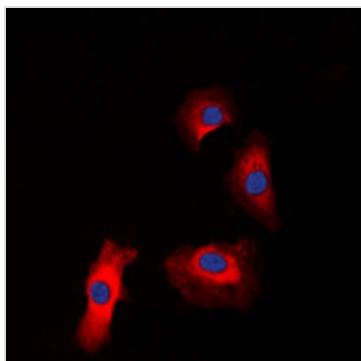


For full product information, images and publications, please visit our [website](#).

For laboratory research use only. Not for any clinical, therapeutic, or diagnostic use in humans or animals. Not for animal or human consumption.

**Note**

Purchasers shall not, and agree not to enable third parties to, analyze, copy, reverse engineer or otherwise attempt to determine the structure or sequence of the product.

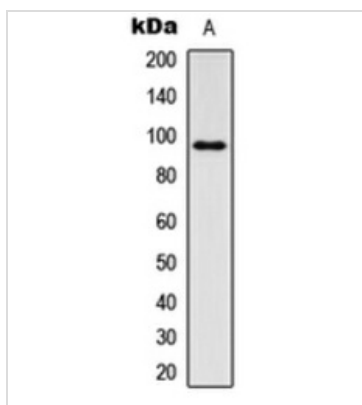
**DATA IMAGES**

**GTX55013 ICC/IF Image**

ICC/IF analysis of formalin-fixed HeLa cells using GTX55013 IGF1R beta (phospho Tyr1131) / Insulin Receptor beta (phospho Tyr1146) antibody.

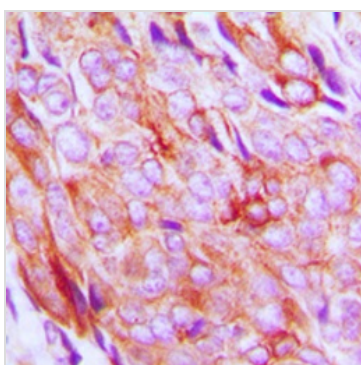
Red : Primary antibody

Blue : DAPI

Permeabilization : 0.1% Triton X-100 in TBS for 5-10 minutes


**GTX55013 WB Image**

WB analysis of IGF-treated HeLa (A) whole cell lysates using GTX55013 IGF1R beta (phospho Tyr1131) / Insulin Receptor beta (phospho Tyr1146) antibody.


**GTX55013 IHC-P Image**

IHC-P analysis of formalin fixed human breast cancer tissue section using GTX55013 IGF1R beta (phospho Tyr1131) / Insulin Receptor beta (phospho Tyr1146) antibody.

Antigen retrieval : Heat mediated antigen retrieval with sodium citrate buffer (pH 6.0)



For full product information, images and publications, please visit our [website](https://www.genetex.com).