

Insulin Receptor beta (phospho Tyr1316) antibody

Cat. No. GTX55014

Host	Rabbit
Clonality	Polyclonal
Isotype	IgG
Applications	WB, IHC-P
Reactivity	Human, Mouse, Rat

Package
100 µl

Applications

Application Note

*Optimal dilutions/concentrations should be determined by the researcher.

Suggested dilution	Recommended dilution
WB	1:500 - 1:1000
IHC-P	1:100 - 1:200

Not tested in other applications.

Calculated MW	156 kDa. (Note)
Product Note	The full-length Insulin Receptor includes the 27 aa signal peptide that is cleaved during maturation. The Tyr1316 of mature Insulin Receptor (P06213-2) is equivalent to Tyr1343 of uncleaved Insulin Receptor (P06213-2) or Tyr1355 of uncleaved Insulin Receptor (P06213-1).

Properties

Form	Liquid
Buffer	0.42% Potassium Phosphate, 0.87% NaCl, 30% Glycerol
Preservative	0.01% Sodium azide
Storage	Store as concentrated solution. Centrifuge briefly prior to opening vial. For short-term storage (1-2 weeks), store at 4°C. For long-term storage, aliquot and store at -20°C or below. Avoid multiple freeze-thaw cycles.
Concentration	Batch dependent (Please refer to the vial label for the specific concentration.)
Immunogen	KLH-conjugated synthetic peptide encompassing a sequence within the C-term region of human Insulin Receptor (pY1316). The exact sequence is proprietary.
Purification	Purified by antigen-affinity chromatography
Conjugation	Unconjugated



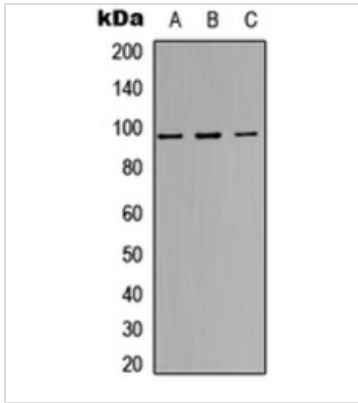
For full product information, images and publications, please visit our [website](#).

For laboratory research use only. Not for any clinical, therapeutic, or diagnostic use in humans or animals. Not for animal or human consumption.

Note

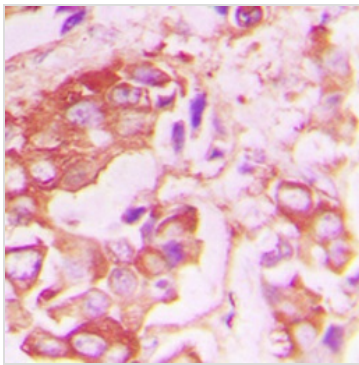
Purchasers shall not, and agree not to enable third parties to, analyze, copy, reverse engineer or otherwise attempt to determine the structure or sequence of the product.

DATA IMAGES



GTX55014 WB Image

WB analysis of insulin-treated HeLa (A), mouse brain (B), rat brain (C) whole cell lysates using GTX55014 Insulin Receptor beta (phospho Tyr1316) antibody.



GTX55014 IHC-P Image

IHC-P analysis of formalin fixed human lung cancer tissue section using GTX55014 Insulin Receptor beta (phospho Tyr1316) antibody.

Antigen retrieval : Heat mediated antigen retrieval with sodium citrate buffer (pH 6.0)



For full product information, images and publications, please visit our [website](https://www.genetex.com).