

p38 MAPK (phospho Tyr323) antibody

Cat. No. GTX55020

Host	Rabbit
Clonality	Polyclonal
Isotype	IgG
Applications	WB, IHC-P
Reactivity	Human, Mouse

Package
100 µl

Applications

Application Note

*Optimal dilutions/concentrations should be determined by the researcher.

Suggested dilution	Recommended dilution
WB	1:500 - 1:1000
IHC-P	1:100 - 1:200

Not tested in other applications.

Calculated MW 41 kDa. ([Note](#))

Properties

Form	Liquid
Buffer	0.42% Potassium Phosphate, 0.87% NaCl, 30% Glycerol
Preservative	0.01% Sodium azide
Storage	Store as concentrated solution. Centrifuge briefly prior to opening vial. For short-term storage (1-2 weeks), store at 4°C. For long-term storage, aliquot and store at -20°C or below. Avoid multiple freeze-thaw cycles.
Concentration	Batch dependent (Please refer to the vial label for the specific concentration.)
Immunogen	KLH-conjugated synthetic peptide encompassing a sequence within the C-term region of p38 MAPK. The exact sequence is proprietary.
Purification	Purified by antigen-affinity chromatography
Conjugation	Unconjugated

Note

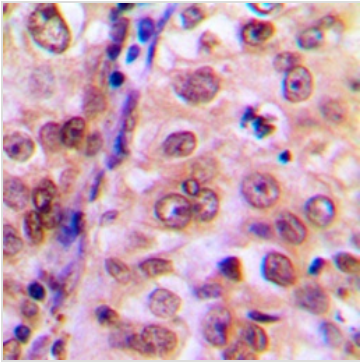
For laboratory research use only. Not for any clinical, therapeutic, or diagnostic use in humans or animals. Not for animal or human consumption.

Purchasers shall not, and agree not to enable third parties to, analyze, copy, reverse engineer or otherwise attempt to determine the structure or sequence of the product.



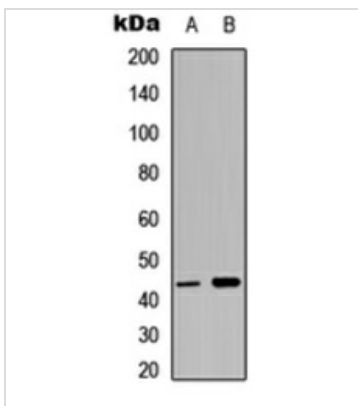
For full product information, images and publications, please visit our [website](#).

DATA IMAGES

**GTX55020 IHC-P Image**

IHC-P analysis of formalin fixed human breast cancer tissue section using GTX55020 p38 MAPK (phospho Tyr323) antibody.

Antigen retrieval : Heat mediated antigen retrieval with sodium citrate buffer (pH 6.0)

**GTX55020 WB Image**

WB analysis of UV-treated HepG2 (A), UV-treated NIH3T3 (B) whole cell lysates using GTX55020 p38 MAPK (phospho Tyr323) antibody.



For full product information, images and publications, please visit our [website](#).