

FGF5 antibody

Cat. No. GTX55145

Host	Rabbit
Clonality	Polyclonal
Isotype	IgG
Applications	WB
Reactivity	Human, Mouse

Package
100 µl

Applications

Application Note

*Optimal dilutions/concentrations should be determined by the researcher.

Suggested dilution	Recommended dilution
WB	1:500 - 1:1000
Not tested in other applications.	

Calculated MW 30 kDa. ([Note](#))

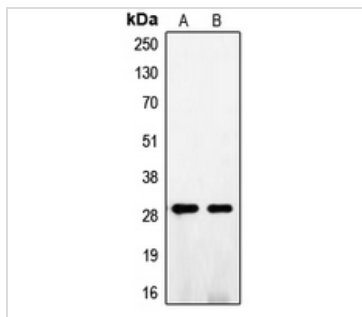
Properties

Form	Liquid
Buffer	0.42% Potassium phosphate, 0.87% Sodium chloride pH 7.3, 30% glycerol, 0.01% sodium azide
Storage	Store as concentrated solution. Centrifuge briefly prior to opening vial. For short-term storage (1-2 weeks), store at 4°C. For long-term storage, aliquot and store at -20° C or below. Avoid multiple freeze-thaw cycles.
Immunogen	KLH-conjugated synthetic peptide encompassing a sequence within the C-term region of FGF5. The exact sequence is proprietary.
Purification	Purified by antigen-affinity chromatography
Conjugation	Unconjugated
Note	For laboratory research use only. Not for any clinical, therapeutic, or diagnostic use in humans or animals. Not for animal or human consumption. Purchasers shall not, and agree not to enable third parties to, analyze, copy, reverse engineer or otherwise attempt to determine the structure or sequence of the product.



For full product information, images and publications, please visit our [website](#).

DATA IMAGES



GTX55145 WB Image

WB analysis of A375 (A), NIH3T3 (B) whole cell lysates using GTX55145 FGF5 antibody.



For full product information, images and publications, please visit our [website](#).