

SENP7 antibody

Cat. No. GTX55205

Host	Rabbit
Clonality	Polyclonal
Isotype	IgG
Applications	WB
Reactivity	Human, Mouse

Package
100 µl

Applications

Application Note

*Optimal dilutions/concentrations should be determined by the researcher.

Suggested dilution	Recommended dilution
--------------------	----------------------

WB	1:500 - 1:1000
----	----------------

Not tested in other applications.

Calculated MW	120 kDa. (Note)
----------------------	-----------------------------------

Properties

Form	Liquid
-------------	--------

Buffer	0.42% Potassium Phosphate, 0.87% NaCl, 30% Glycerol
---------------	---

Preservative	0.01% Sodium azide
---------------------	--------------------

Storage	Store as concentrated solution. Centrifuge briefly prior to opening vial. For short-term storage (1-2 weeks), store at 4°C. For long-term storage, aliquot and store at -20°C or below. Avoid multiple freeze-thaw cycles.
----------------	--

Concentration	Batch dependent (Please refer to the vial label for the specific concentration.)
----------------------	--

Immunogen	KLH-conjugated synthetic peptide encompassing a sequence within the C-term region of SENP7. The exact sequence is proprietary.
------------------	--

Purification	Purified by antigen-affinity chromatography
---------------------	---

Conjugation	Unconjugated
--------------------	--------------

Note

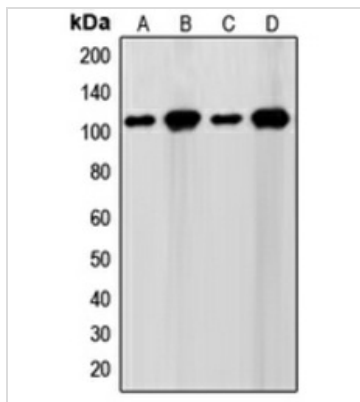
For laboratory research use only. Not for any clinical, therapeutic, or diagnostic use in humans or animals. Not for animal or human consumption.

Purchasers shall not, and agree not to enable third parties to, analyze, copy, reverse engineer or otherwise attempt to determine the structure or sequence of the product.



For full product information, images and publications, please visit our [website](#).

DATA IMAGES

**GTX55205 WB Image**

WB analysis of WI38 (A), HeLa (B), NIH3T3 (C), Jurkat (D) whole cell lysates using GTX55205 SENP7 antibody.



For full product information, images and publications, please visit our [website](#).