

## SREBP1 (phospho Ser439) antibody

**Cat. No. GTX55392**

<b>Host</b>	Rabbit
<b>Clonality</b>	Polyclonal
<b>Isotype</b>	IgG
<b>Applications</b>	WB
<b>Reactivity</b>	Human

**Package**  
100 µl

## Applications

**Application Note**

\*Optimal dilutions/concentrations should be determined by the researcher.

Suggested dilution	Recommended dilution
WB	1:500-1:1000

Not tested in other applications.

**Calculated MW** 122 kDa. ([Note](#))

## Properties

<b>Form</b>	Liquid
<b>Buffer</b>	PBS, 150mM NaCl, 50% Glycerol
<b>Preservative</b>	0.02% Sodium azide
<b>Storage</b>	Store as concentrated solution. Centrifuge briefly prior to opening vial. For short-term storage (1-2 weeks), store at 4°C. For long-term storage, aliquot and store at -20°C or below. Avoid multiple freeze-thaw cycles.
<b>Concentration</b>	1 mg/ml (Please refer to the vial label for the specific concentration.)
<b>Immunogen</b>	Peptide sequence around phosphorylation site of serine 439 (Q-S-S(p)-P-L) derived from human SREBP1.
<b>Purification</b>	Purified by antigen-affinity chromatography. Non-phospho specific antibodies were removed by chromatography using non-phosphopeptide.
<b>Conjugation</b>	Unconjugated

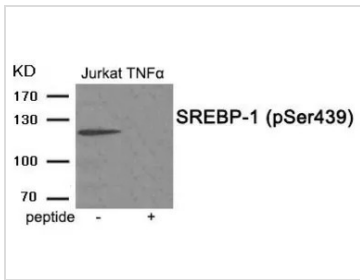
For laboratory research use only. Not for any clinical, therapeutic, or diagnostic use in humans or animals. Not for animal or human consumption.

**Note**  
Purchasers shall not, and agree not to enable third parties to, analyze, copy, reverse engineer or otherwise attempt to determine the structure or sequence of the product.



For full product information, images and publications, please visit our [website](#).

## DATA IMAGES

**GTX55392 WB Image**

WB analysis of extracts from Jurkat cells treated with TNF using GTX55392 SREBP1 (phospho Ser439) antibody.

Left : Primary antibody

Right : Primary antibody pre-incubated with the antigen specific peptide



For full product information, images and publications, please visit our [website](#).