

Insulin Receptor beta (phospho Tyr1322) antibody

Cat. No. GTX55415

Host	Rabbit
Clonality	Polyclonal
Isotype	IgG
Applications	WB
Reactivity	Human

Package
100 µl

Applications

Application Note

*Optimal dilutions/concentrations should be determined by the researcher.

Suggested dilution	Recommended dilution
WB	1:500-1:1000

Not tested in other applications.

Calculated MW 156 kDa. ([Note](#))

Product Note

The full-length Insulin Receptor includes the 27 aa signal peptide that is cleaved during maturation. The Tyr1322 of mature Insulin Receptor (P06213-2) is equivalent to Tyr1349 of uncleaved Insulin Receptor or Tyr1361 of uncleaved Insulin Receptor (P06213-1)..

Properties

Form	Liquid
Buffer	PBS, 150mM NaCl, 50% Glycerol
Preservative	0.02% Sodium azide
Storage	Store as concentrated solution. Centrifuge briefly prior to opening vial. For short-term storage (1-2 weeks), store at 4°C. For long-term storage, aliquot and store at -20°C or below. Avoid multiple freeze-thaw cycles.
Concentration	1 mg/ml (Please refer to the vial label for the specific concentration.)
Immunogen	Peptide sequence around phosphorylation site of Tyrosine 1322 (I-P-Y(p)-T-H) derived from Human IR.
Purification	Purified by antigen-affinity chromatography. Non-phospho specific antibodies were removed by chromatography using non-phosphopeptide.
Conjugation	Unconjugated

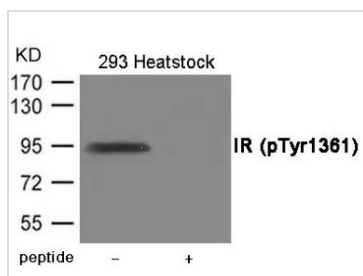


For full product information, images and publications, please visit our [website](#).

For laboratory research use only. Not for any clinical, therapeutic, or diagnostic use in humans or animals. Not for animal or human consumption.

Note

Purchasers shall not, and agree not to enable third parties to, analyze, copy, reverse engineer or otherwise attempt to determine the structure or sequence of the product.

DATA IMAGES

GTX55415 WB Image

WB analysis of extracts from 293 cells treated with heatshock condition using GTX55415 Insulin Receptor beta (phospho Tyr1322) antibody.

Left : Primary antibody

Right : Primary antibody pre-incubated with the antigen specific peptide



For full product information, images and publications, please visit our [website](#).