

HBP1 (phospho Ser402) antibody

Cat. No. GTX55436

Host	Rabbit
Clonality	Polyclonal
Isotype	IgG
Applications	WB
Reactivity	Human

Package
100 µl

Applications

Application Note

*Optimal dilutions/concentrations should be determined by the researcher.

Suggested dilution	Recommended dilution
--------------------	----------------------

WB	1:500-1:3000
----	--------------

Not tested in other applications.

Calculated MW	58 kDa. (Note)
----------------------	----------------------------------

Properties

Form	Liquid
-------------	--------

Buffer	PBS, 150mM NaCl, 50% Glycerol
---------------	-------------------------------

Preservative	0.02% Sodium azide
---------------------	--------------------

Storage	Store as concentrated solution. Centrifuge briefly prior to opening vial. For short-term storage (1-2 weeks), store at 4°C. For long-term storage, aliquot and store at -20°C or below. Avoid multiple freeze-thaw cycles.
----------------	--

Concentration	1 mg/ml (Please refer to the vial label for the specific concentration.)
----------------------	--

Immunogen	Peptide sequence around phosphorylation site of serine 402 (C-G-S(p)-P-G) derived from human HBP1.
------------------	--

Purification	Purified by antigen-affinity chromatography. Non-phospho specific antibodies were removed by chromatography using non-phosphopeptide.
---------------------	---

Conjugation	Unconjugated
--------------------	--------------

Note

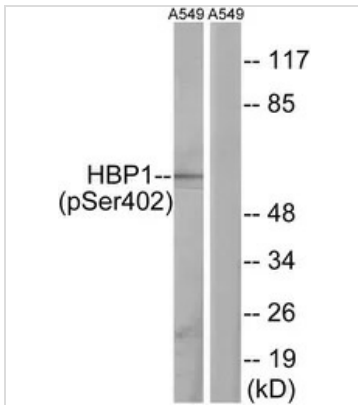
For laboratory research use only. Not for any clinical, therapeutic, or diagnostic use in humans or animals. Not for animal or human consumption.

Purchasers shall not, and agree not to enable third parties to, analyze, copy, reverse engineer or otherwise attempt to determine the structure or sequence of the product.



For full product information, images and publications, please visit our [website](#).

DATA IMAGES

**GTX55436 WB Image**

WB analysis of extracts from A549 cells treated with PMA (125ng/ml 30mins) using GTX55436 HBP1 (phospho Ser402) antibody.

Left : Primary antibody

Right : Primary antibody pre-incubated with the antigen specific peptide



For full product information, images and publications, please visit our [website](#).