

Histone H3K4me3 (Tri-methyl Lys4) antibody

Cat. No. GTX55482

Host	Rabbit
Clonality	Polyclonal
Isotype	IgG
Application	WB, ICC/IF, IHC-P, Dot, ChIP assay
Reactivity	Human, Mouse, Rat

Package
100 µl

APPLICATION

Application Note

*Optimal dilutions/concentrations should be determined by the researcher.

Suggested dilution	Recommended dilution
WB	1:500 - 1:2000
ICC/IF	1:50 - 1:200
IHC-P	1:50 - 1:200
Dot	Assay dependent
ChIP assay	1:20 - 1:100

Not tested in other applications.

PROPERTIES

Form	Liquid
Buffer	PBS, 50% Glycerol
Preservative	0.02% Sodium azide
Storage	Store as concentrated solution. Centrifuge briefly prior to opening vial. For short-term storage (1-2 weeks), store at 4°C. For long-term storage, aliquot and store at -20°C or below. Avoid multiple freeze-thaw cycles.
Concentration	Batch dependent (Please refer to the vial label for the specific concentration.)
Immunogen	A synthetic methylated peptide corresponding to residues surrounding K4 of human histone H3
Purification	Purified by affinity chromatography
Conjugation	Unconjugated

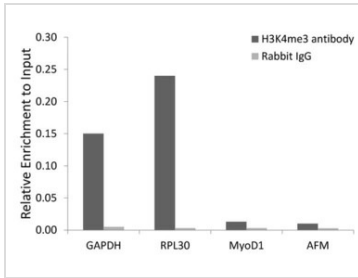
Note

For laboratory research use only. Not for any clinical, therapeutic, or diagnostic use in humans or animals. Not for animal or human consumption.

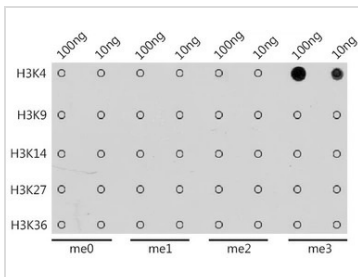
Purchasers shall not, and agree not to enable third parties to, analyze, copy, reverse engineer or otherwise attempt to determine the structure or sequence of the product.



For full product information, images and publications, please visit our [website](#).

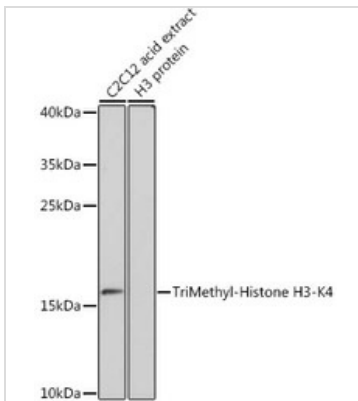
DATA IMAGES

GTX55482 ChIP assay Image

ChIP analysis of 293 cell lysate using GTX55482 Histone H3K4me3 (Tri-methyl Lys4) antibody. The amount of immunoprecipitated DNA was checked by quantitative PCR. Histogram was constructed by the ratios of the immunoprecipitated DNA to the input.


GTX55482 Dot Image

Dot blot analysis of all sorts of methylation peptides using GTX55482 Histone H3K4me3 (Tri-methyl Lys4) antibody.

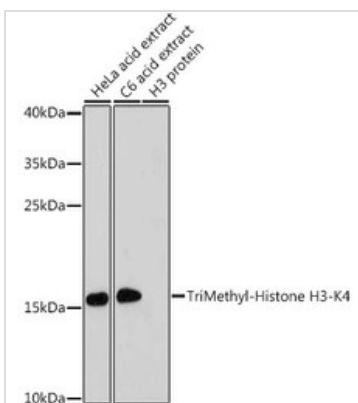
Dilution : 1:1000


GTX55482 WB Image

WB analysis of C2C12 cell lysate using GTX55482 Histone H3K4me3 (Tri-methyl Lys4) antibody.

Dilution : 1:1000

Loading : 25µg per lane


GTX55482 WB Image

WB analysis of various sample lysates using GTX55482 Histone H3K4me3 (Tri-methyl Lys4) antibody.

Dilution : 1:1000

Loading : 25µg per lane



For full product information, images and publications, please visit our [website](http://www.genetex.com).