

# Histone H3K79me1 (mono-methyl Lys79) antibody

**Cat. No. GTX55483**

<b>Host</b>	Rabbit
<b>Clonality</b>	Polyclonal
<b>Isotype</b>	IgG
<b>Applications</b>	WB, ICC/IF, Dot, ChIP assay
<b>Reactivity</b>	Human, Mouse

**Package**  
100 µl

## Applications

### Application Note

\*Optimal dilutions/concentrations should be determined by the researcher.

Suggested dilution	Recommended dilution
WB	1:500 - 1:2000
ICC/IF	1:50 - 1:200
Dot	Assay dependent
ChIP assay	1:20 - 1:100

Not tested in other applications.

## Properties

<b>Form</b>	Liquid
<b>Buffer</b>	PBS, 50% Glycerol
<b>Preservative</b>	0.02% Sodium azide
<b>Storage</b>	Store as concentrated solution. Centrifuge briefly prior to opening vial. For short-term storage (1-2 weeks), store at 4°C. For long-term storage, aliquot and store at -20°C or below. Avoid multiple freeze-thaw cycles.
<b>Concentration</b>	Batch dependent (Please refer to the vial label for the specific concentration.)
<b>Immunogen</b>	A synthetic methylated peptide corresponding to residues surrounding K79 of human histone H3
<b>Purification</b>	Purified by affinity chromatography
<b>Conjugation</b>	Unconjugated

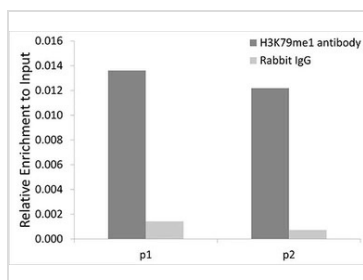
### Note

For laboratory research use only. Not for any clinical, therapeutic, or diagnostic use in humans or animals. Not for animal or human consumption.

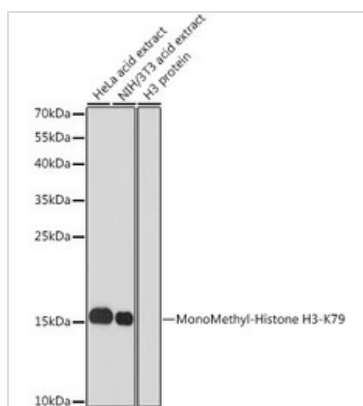
Purchasers shall not, and agree not to enable third parties to, analyze, copy, reverse engineer or otherwise attempt to determine the structure or sequence of the product.



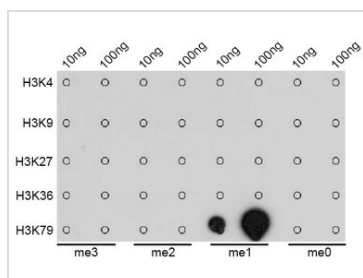
For full product information, images and publications, please visit our [website](#).

**DATA IMAGES**

**GTX55483 ChIP assay Image**

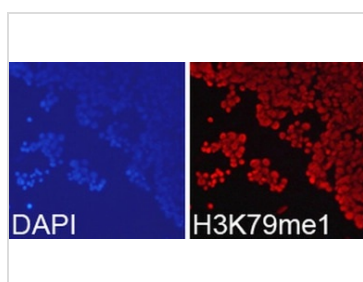
ChIP analysis of 293T cell lysate using GTX55483 Histone H3K79me1 (mono-methyl Lys79) antibody. The amount of immunoprecipitated DNA was checked by quantitative PCR. Histogram was constructed by the ratios of the immunoprecipitated DNA to the input.


**GTX55483 WB Image**

WB analysis of various sample lysates using GTX55483 Histone H3K79me1 (mono-methyl Lys79) antibody.  
Dilution : 1:1000  
Loading : 25µg per lane


**GTX55483 Dot Image**

Dot blot analysis of all sorts of methylation peptides using GTX55483 Histone H3K79me1 (mono-methyl Lys79) antibody.


**GTX55483 ICC/IF Image**

ICC/IF analysis of 293T cells using GTX55483 Histone H3K79me1 (mono-methyl Lys79) antibody.  
Blue : DAPI



For full product information, images and publications, please visit our [website](https://www.genetex.com).