

CD34 antibody

Cat. No. GTX55558

Host	Rabbit
Clonality	Polyclonal
Isotype	IgG
Application	WB, ICC/IF
Reactivity	Human, Mouse

Package
100 µl

APPLICATION

Application Note

*Optimal dilutions/concentrations should be determined by the researcher.

Suggested dilution	Recommended dilution
WB	1:500 - 1:2000
ICC/IF	1:50 - 1:200

Not tested in other applications.

Calculated MW 41 kDa. ([Note](#))

PROPERTIES

Form	Liquid
Buffer	PBS, 50% Glycerol
Preservative	0.02% Sodium azide
Storage	Store as concentrated solution. Centrifuge briefly prior to opening vial. For short-term storage (1-2 weeks), store at 4°C. For long-term storage, aliquot and store at -20°C or below. Avoid multiple freeze-thaw cycles.
Concentration	Batch dependent (Please refer to the vial label for the specific concentration.)
Immunogen	Recombinant protein of human CD34
Purification	Purified by affinity chromatography
Conjugation	Unconjugated

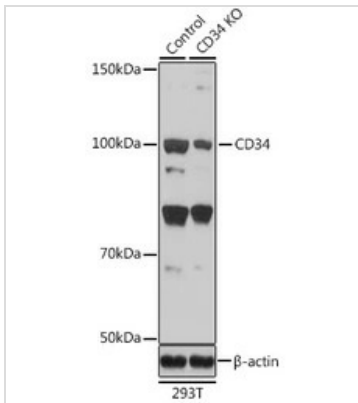
Note

For laboratory research use only. Not for any clinical, therapeutic, or diagnostic use in humans or animals. Not for animal or human consumption.

Purchasers shall not, and agree not to enable third parties to, analyze, copy, reverse engineer or otherwise attempt to determine the structure or sequence of the product.



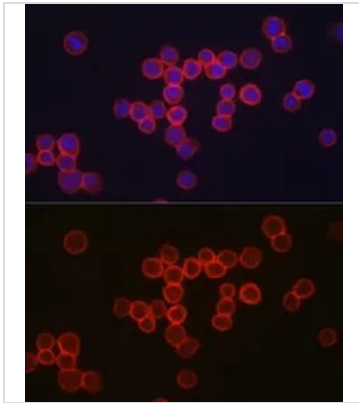
For full product information, images and publications, please visit our [website](#).

DATA IMAGES

GTX55558 WB Image

WB analysis of normal (control) and knockout (KO) 293T cell lysate using GTX55558 CD34 antibody.

Dilution : 1:3000

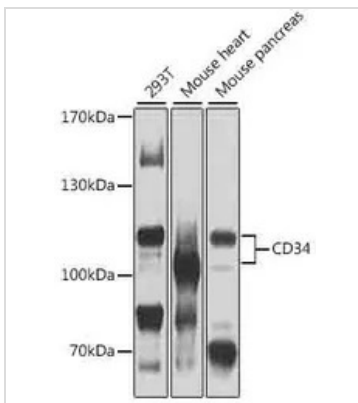
Loading : 25µg per lane


GTX55558 ICC/IF Image

ICC/IF analysis of TF-1 cells using GTX55558 CD34 antibody.

Blue : DAPI

Dilution : 1:300


GTX55558 WB Image

WB analysis of various sample lysates using GTX55558 CD34 antibody.

Dilution : 1:1000

Loading : 25µg per lane



For full product information, images and publications, please visit our [website](https://www.genetex.com).