

## CHI3L1 antibody

Cat. No. GTX55570

Host	Rabbit
Clonality	Polyclonal
Isotype	IgG
Applications	WB, ICC/IF, IHC-P
Reactivity	Human, Mouse, Rat

Package  
100 µl

## Applications

## Application Note

\*Optimal dilutions/concentrations should be determined by the researcher.

Suggested dilution	Recommended dilution
WB	1:500-1:2000
ICC/IF	1:50-1:200
IHC-P	1:50-1:200

Not tested in other applications.

Calculated MW 43 kDa. ([Note](#))

## Properties

Form	Liquid
Buffer	PBS pH7.3, 0.02% sodium azide, 50% glycerol.
Storage	Store as concentrated solution. Centrifuge briefly prior to opening vial. For short-term storage (1-2 weeks), store at 4°C. For long-term storage, aliquot and store at -20°C or below. Avoid multiple freeze-thaw cycles.
Immunogen	Recombinant fusion protein containing a sequence corresponding to amino acids 22-240 of human CHI3L1 (NP_001267.2).
Purification	Purified by affinity chromatography
Conjugation	Unconjugated

## Note

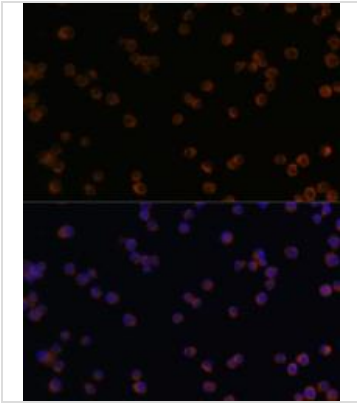
For laboratory research use only. Not for any clinical, therapeutic, or diagnostic use in humans or animals. Not for animal or human consumption.

Purchasers shall not, and agree not to enable third parties to, analyze, copy, reverse engineer or otherwise attempt to determine the structure or sequence of the product.



For full product information, images and publications, please visit our [website](#).

## DATA IMAGES

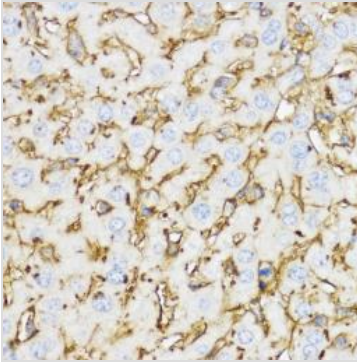


### GTX55570 ICC/IF Image

ICC/IF analysis of Raw264.7 cells using GTX55570 CHI3L1 antibody.

Blue : DAPI

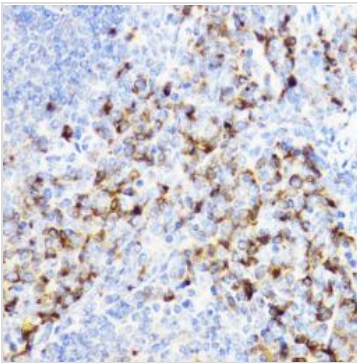
Dilution : 1:100



### GTX55570 IHC-P Image

IHC-P analysis of mouse liver tissue using GTX55570 CHI3L1 antibody.

Dilution : 1:100



### GTX55570 IHC-P Image

IHC-P analysis of mouse spleen tissue using GTX55570 CHI3L1 antibody.

Dilution : 1:100



For full product information, images and publications, please visit our [website](#).