

## Ferritin Light Chain antibody

**Cat. No. GTX55618**

|                     |                   |
|---------------------|-------------------|
| <b>Host</b>         | Rabbit            |
| <b>Clonality</b>    | Polyclonal        |
| <b>Isotype</b>      | IgG               |
| <b>Applications</b> | WB, ICC/IF, IHC-P |
| <b>Reactivity</b>   | Human, Mouse      |

**Package**  
100 µl

## Applications

**Application Note**

\*Optimal dilutions/concentrations should be determined by the researcher.

| Suggested dilution | Recommended dilution |
|--------------------|----------------------|
| WB                 | 1:500 - 1:2000       |
| ICC/IF             | 1:10 - 1:100         |
| IHC-P              | 1:50 - 1:200         |

Not tested in other applications.

**Calculated MW** 20 kDa. ([Note](#))

## Properties

|                      |  |
|----------------------|--|
| <b>Form</b>          | Liquid   |
| <b>Buffer</b>        | PBS, 50% Glycerol  |
| <b>Preservative</b>  | 0.02% Sodium azide   |
| <b>Storage</b>       | Store as concentrated solution. Centrifuge briefly prior to opening vial. For short-term storage (1-2 weeks), store at 4°C. For long-term storage, aliquot and store at -20°C or below. Avoid multiple freeze-thaw cycles. |
| <b>Concentration</b> | Batch dependent (Please refer to the vial label for the specific concentration.)   |
| <b>Immunogen</b>     | Recombinant fusion protein containing a sequence corresponding to amino acids 1-175 of human FTL (NP_000137.2).  |
| <b>Purification</b>  | Purified by affinity chromatography  |
| <b>Conjugation</b>   | Unconjugated   |

**Note**

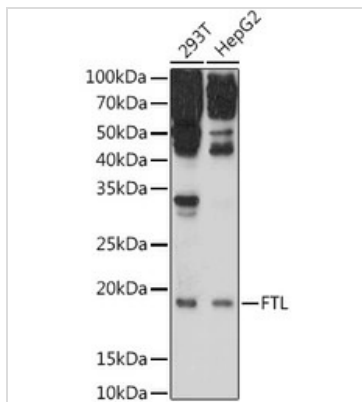
For laboratory research use only. Not for any clinical, therapeutic, or diagnostic use in humans or animals. Not for animal or human consumption.

Purchasers shall not, and agree not to enable third parties to, analyze, copy, reverse engineer or otherwise attempt to determine the structure or sequence of the product.



For full product information, images and publications, please visit our [website](#).

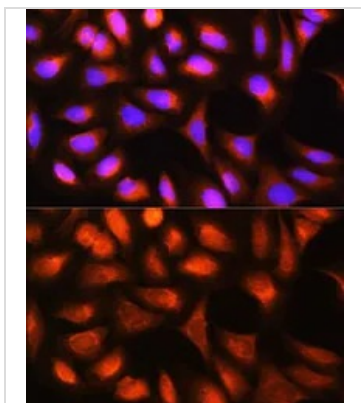
## DATA IMAGES

**GTX55618 WB Image**

WB analysis of various sample lysates using GTX55618 Ferritin Light Chain antibody.

Dilution : 1:1000

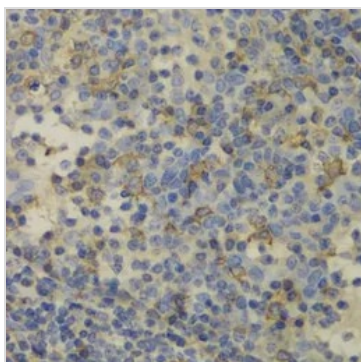
Loading : 25µg per lane

**GTX55618 ICC/IF Image**

ICC/IF analysis of U2OS cells using GTX55618 Ferritin Light Chain antibody.

Blue : DAPI

Dilution : 1:100

**GTX55618 IHC-P Image**

IHC-P analysis of human amygdalitis tissue using GTX55618 Ferritin Light Chain antibody.

Dilution : 1:100



For full product information, images and publications, please visit our [website](#).