

# FIS1 antibody

**Cat. No. GTX55624**

<b>Host</b>	Rabbit
<b>Clonality</b>	Polyclonal
<b>Isotype</b>	IgG
<b>Application</b>	WB, ICC/IF, IHC-P, IP
<b>Reactivity</b>	Human, Mouse, Rat

**Package**  
100 µl

## APPLICATION

### Application Note

\*Optimal dilutions/concentrations should be determined by the researcher.

Suggested dilution	Recommended dilution
WB	1:500 - 1:2000
ICC/IF	1:50 - 1:200
IHC-P	1:50 - 1:200
IP	1:50 - 1:200

Not tested in other applications.

**Calculated MW** 17 kDa. ( [Note](#) )

## PROPERTIES

<b>Form</b>	Liquid
<b>Buffer</b>	PBS, 50% Glycerol
<b>Preservative</b>	0.02% Sodium azide
<b>Storage</b>	Store as concentrated solution. Centrifuge briefly prior to opening vial. For short-term storage (1-2 weeks), store at 4°C. For long-term storage, aliquot and store at -20°C or below. Avoid multiple freeze-thaw cycles.
<b>Concentration</b>	Batch dependent (Please refer to the vial label for the specific concentration.)
<b>Immunogen</b>	Recombinant fusion protein containing a sequence corresponding to amino acids 1-122 of human FIS1 (NP_057152.2).
<b>Purification</b>	Purified by affinity chromatography
<b>Conjugation</b>	Unconjugated

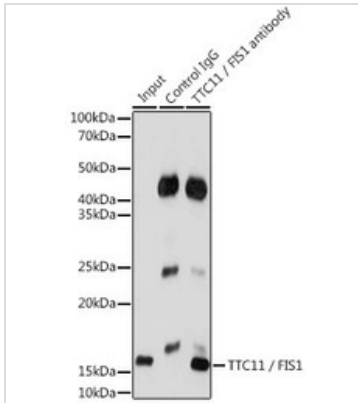
### Note

For laboratory research use only. Not for any clinical, therapeutic, or diagnostic use in humans or animals. Not for animal or human consumption.

Purchasers shall not, and agree not to enable third parties to, analyze, copy, reverse engineer or otherwise attempt to determine the structure or sequence of the product.



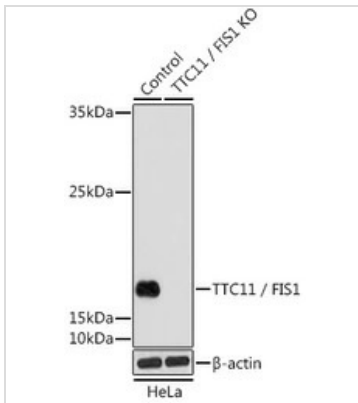
For full product information, images and publications, please visit our [website](#).

**DATA IMAGES**

**GTX55624 IP Image**

IP analysis of MCF-7 cell lysate using GTX55624 FIS1 antibody.

Antibody amount : 3 $\mu$ g / 200 $\mu$ g lysate

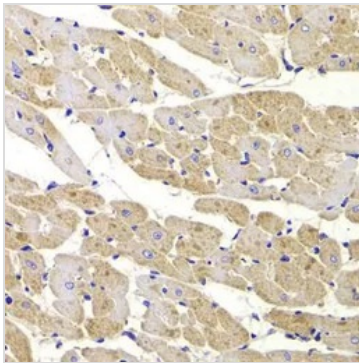
Dilution : 1:1000


**GTX55624 WB Image**

WB analysis of normal (control) and knockout (KO) HeLa cell lysate using GTX55624 FIS1 antibody.

Dilution : 1:1000

Loading : 25 $\mu$ g per lane


**GTX55624 IHC-P Image**

IHC-P analysis of rat heart tissue using GTX55624 FIS1 antibody.

Dilution : 1:100



For full product information, images and publications, please visit our [website](https://www.genetex.com).