

Galectin 3 antibody

Cat. No. GTX55633

Host	Rabbit
Clonality	Polyclonal
Isotype	IgG
Applications	ICC/IF, IHC-P
Reactivity	Human, Mouse, Rat

Package
100 µl

Applications

Application Note

*Optimal dilutions/concentrations should be determined by the researcher.

Suggested dilution	Recommended dilution
ICC/IF	1:20 - 1:50
IHC-P	1:50 - 1:200

Not tested in other applications.

Properties

Form	Liquid
Buffer	PBS, 50% Glycerol
Preservative	0.02% Sodium azide
Storage	Store as concentrated solution. Centrifuge briefly prior to opening vial. For short-term storage (1-2 weeks), store at 4°C. For long-term storage, aliquot and store at -20°C or below. Avoid multiple freeze-thaw cycles.
Concentration	Batch dependent (Please refer to the vial label for the specific concentration.)
Immunogen	Recombinant fusion protein containing a sequence corresponding to amino acids 1-250 of human LGALS3 (NP_002297.2).
Purification	Purified by affinity chromatography
Conjugation	Unconjugated

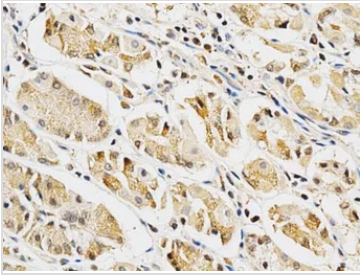
Note

For laboratory research use only. Not for any clinical, therapeutic, or diagnostic use in humans or animals. Not for animal or human consumption.

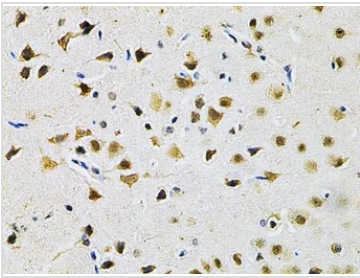
Purchasers shall not, and agree not to enable third parties to, analyze, copy, reverse engineer or otherwise attempt to determine the structure or sequence of the product.



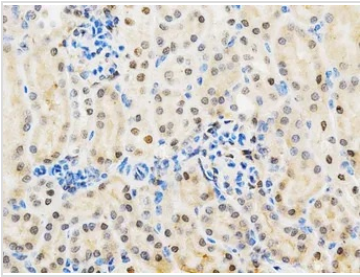
For full product information, images and publications, please visit our [website](#).

DATA IMAGES

GTX55633 IHC-P Image

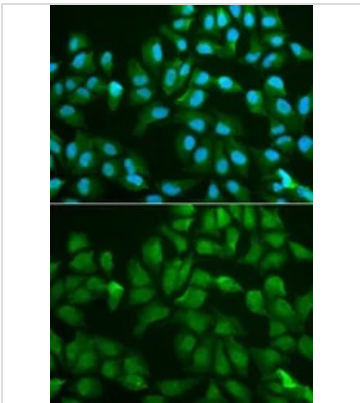
IHC-P analysis of human stomach tissue using GTX55633 Galectin 3 antibody.
Dilution : 1:200


GTX55633 IHC-P Image

IHC-P analysis of rat brain tissue using GTX55633 Galectin 3 antibody.
Dilution : 1:200


GTX55633 IHC-P Image

IHC-P analysis of mouse kidney tissue using GTX55633 Galectin 3 antibody.
Dilution : 1:200


GTX55633 ICC/IF Image

ICC/IF analysis of MCF7 cells using GTX55633 Galectin 3 antibody.
Blue : DAPI



For full product information, images and publications, please visit our [website](#).