

IGFBP4 antibody

Cat. No. GTX55672

Host	Rabbit
Clonality	Polyclonal
Isotype	IgG
Applications	WB, ICC/IF, IHC-P
Reactivity	Human, Mouse, Rat

Package
100 µl

Applications

Application Note

*Optimal dilutions/concentrations should be determined by the researcher.

Suggested dilution	Recommended dilution
WB	1:500 - 1:2000
ICC/IF	1:50 - 1:200
IHC-P	1:50 - 1:100

Not tested in other applications.

Calculated MW 28 kDa. ([Note](#))

Properties

Form	Liquid
Buffer	PBS, 50% Glycerol
Preservative	0.02% Sodium azide
Storage	Store as concentrated solution. Centrifuge briefly prior to opening vial. For short-term storage (1-2 weeks), store at 4°C. For long-term storage, aliquot and store at -20°C or below. Avoid multiple freeze-thaw cycles.
Concentration	Batch dependent (Please refer to the vial label for the specific concentration.)
Immunogen	Recombinant fusion protein containing a sequence corresponding to amino acids 22-258 of human IGFBP4 (NP_001543.2).
Purification	Purified by affinity chromatography
Conjugation	Unconjugated

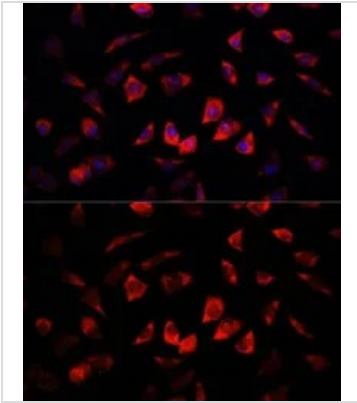
Note For laboratory research use only. Not for any clinical, therapeutic, or diagnostic use in humans or animals. Not for animal or human consumption.

Purchasers shall not, and agree not to enable third parties to, analyze, copy, reverse engineer or otherwise attempt to determine the structure or sequence of the product.



For full product information, images and publications, please visit our [website](#).

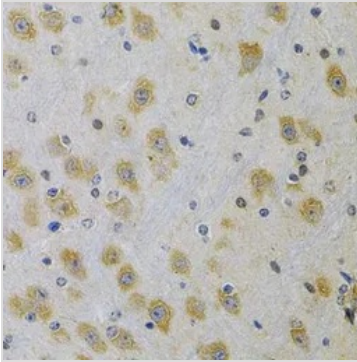
DATA IMAGES

**GTX55672 ICC/IF Image**

ICC/IF analysis of L929 cells using GTX55672 IGFBP4 antibody.

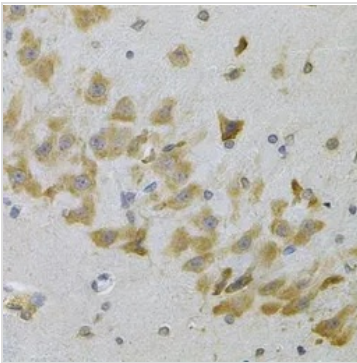
Blue : DAPI

Dilution : 1:100

**GTX55672 IHC-P Image**

IHC-P analysis of rat brain tissue using GTX55672 IGFBP4 antibody.

Dilution : 1:100

**GTX55672 IHC-P Image**

IHC-P analysis of mouse brain tissue using GTX55672 IGFBP4 antibody.

Dilution : 1:100



For full product information, images and publications, please visit our [website](#).