

## IKK epsilon antibody

Cat. No. GTX55673

Host	Rabbit
Clonality	Polyclonal
Isotype	IgG
Applications	WB, ICC/IF, IHC-P
Reactivity	Human, Mouse, Rat

Package  
100 µl

## Applications

## Application Note

\*Optimal dilutions/concentrations should be determined by the researcher.

Suggested dilution	Recommended dilution
WB	1:500 - 1:2000
ICC/IF	1:50 - 1:200
IHC-P	1:50 - 1:200

Not tested in other applications.

Calculated MW 80 kDa. ( [Note](#) )

## Properties

Form	Liquid
Buffer	PBS, 50% Glycerol
Preservative	0.02% Sodium azide
Storage	Store as concentrated solution. Centrifuge briefly prior to opening vial. For short-term storage (1-2 weeks), store at 4°C. For long-term storage, aliquot and store at -20°C or below. Avoid multiple freeze-thaw cycles.
Concentration	Batch dependent (Please refer to the vial label for the specific concentration.)
Immunogen	Recombinant protein of human IKBKE
Purification	Purified by affinity chromatography
Conjugation	Unconjugated

## Note

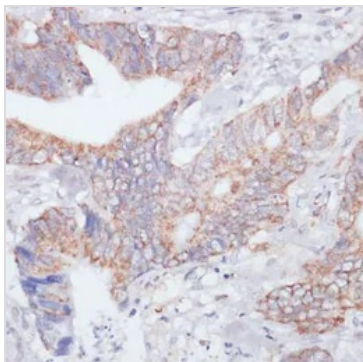
For laboratory research use only. Not for any clinical, therapeutic, or diagnostic use in humans or animals. Not for animal or human consumption.

Purchasers shall not, and agree not to enable third parties to, analyze, copy, reverse engineer or otherwise attempt to determine the structure or sequence of the product.



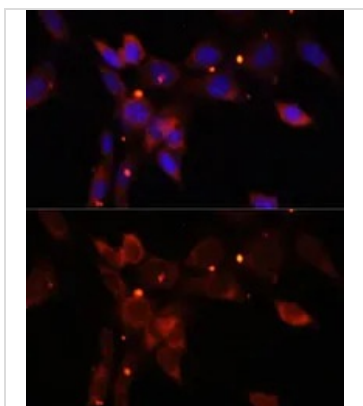
For full product information, images and publications, please visit our [website](#).

## DATA IMAGES



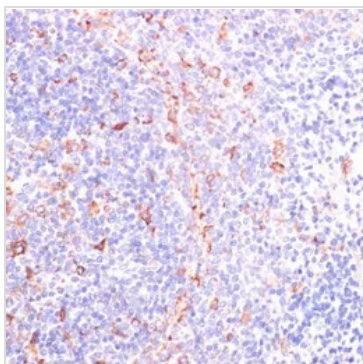
### GTX55673 IHC-P Image

IHC-P analysis of human colon carcinoma tissue using GTX55673 IKK epsilon antibody.  
Dilution : 1:200



### GTX55673 ICC/IF Image

ICC/IF analysis of NIH/3T3 cells using GTX55673 IKK epsilon antibody.  
Blue : DAPI  
Dilution : 1:100



### GTX55673 IHC-P Image

IHC-P analysis of rat spleen tissue using GTX55673 IKK epsilon antibody.  
Dilution : 1:200



For full product information, images and publications, please visit our [website](#).