

IL1 beta antibody

Cat. No. GTX55675

Host	Rabbit
Clonality	Polyclonal
Isotype	IgG
Applications	WB, ICC/IF, IHC-P
Reactivity	Human, Mouse, Rat, Bovine

References (3)

Package

100 µl

Applications

Application Note

*Optimal dilutions/concentrations should be determined by the researcher.

Suggested dilution	Recommended dilution
WB	1:500 - 1:2000
ICC/IF	1:50 - 1:200
IHC-P	Assay dependent

Not tested in other applications.

Calculated MW 31 kDa. ([Note](#))

Properties

Form	Liquid
Buffer	PBS, 50% Glycerol
Preservative	0.02% Sodium azide
Storage	Store as concentrated solution. Centrifuge briefly prior to opening vial. For short-term storage (1-2 weeks), store at 4°C. For long-term storage, aliquot and store at -20°C or below. Avoid multiple freeze-thaw cycles.
Concentration	Batch dependent (Please refer to the vial label for the specific concentration.)
Immunogen	Recombinant fusion protein containing a sequence corresponding to amino acids 1-269 of human IL1B (NP_000567.1).
Purification	Purified by affinity chromatography
Conjugation	Unconjugated

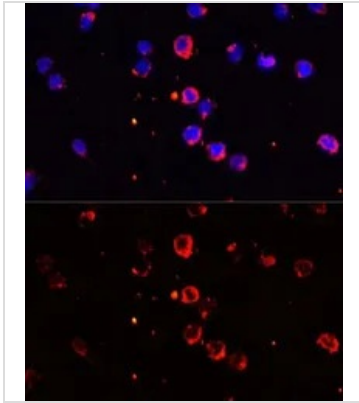
Note

For laboratory research use only. Not for any clinical, therapeutic, or diagnostic use in humans or animals. Not for animal or human consumption.

Purchasers shall not, and agree not to enable third parties to, analyze, copy, reverse engineer or otherwise attempt to determine the structure or sequence of the product.



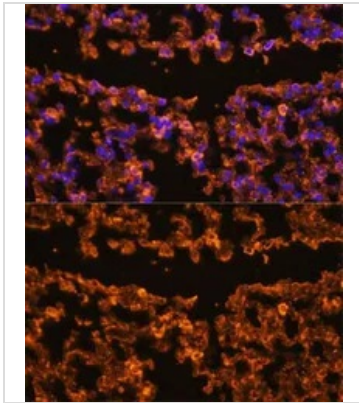
For full product information, images and publications, please visit our [website](#).

DATA IMAGES

GTX55675 ICC/IF Image

ICC/IF analysis of THP-1 cells using GTX55675 IL1 beta antibody.

Blue : DAPI

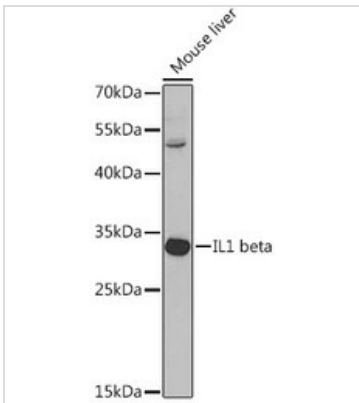
Dilution : 1:100


GTX55675 IHC-P Image

IHC-P analysis of mouse lung tissue using GTX55675 IL1 beta antibody.

Blue : DAPI

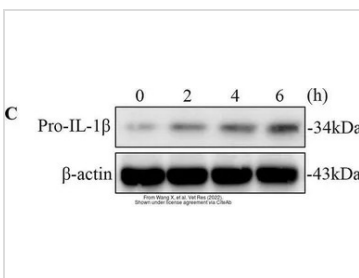
Dilution : 1:100


GTX55675 WB Image

WB analysis of mouse liver tissue lysate using GTX55675 IL1 beta antibody.

Dilution : 1:1000

Loading : 25µg per lane


GTX55675 WB Image

The data was published in the 2022 in Vet Res. [PMID: 35123552](https://pubmed.ncbi.nlm.nih.gov/35123552/)



For full product information, images and publications, please visit our [website](https://www.genetex.com).