

## OPG antibody

**Cat. No. GTX55734**

|                     |                   |
|---------------------|-------------------|
| <b>Host</b>         | Rabbit            |
| <b>Clonality</b>    | Polyclonal        |
| <b>Isotype</b>      | IgG               |
| <b>Applications</b> | WB, ICC/IF, IHC-P |
| <b>Reactivity</b>   | Human, Mouse, Rat |

References ( 6 )

Package

100 µl

## Applications

**Application Note**

\*Optimal dilutions/concentrations should be determined by the researcher.

| Suggested dilution | Recommended dilution |
|--------------------|----------------------|
| WB                 | 1:500 - 1:2000       |
| ICC/IF             | 1:10 - 1:100         |
| IHC-P              | 1:50 - 1:200         |

Not tested in other applications.

**Calculated MW** 46 kDa. ( [Note](#) )

## Properties

|                      |  |
|----------------------|--|
| <b>Form</b>          | Liquid   |
| <b>Buffer</b>        | PBS, 50% Glycerol  |
| <b>Preservative</b>  | 0.02% Sodium azide   |
| <b>Storage</b>       | Store as concentrated solution. Centrifuge briefly prior to opening vial. For short-term storage (1-2 weeks), store at 4°C. For long-term storage, aliquot and store at -20°C or below. Avoid multiple freeze-thaw cycles. |
| <b>Concentration</b> | Batch dependent (Please refer to the vial label for the specific concentration.)   |
| <b>Immunogen</b>     | Recombinant fusion protein containing a sequence corresponding to amino acids 22-280 of human TNFRSF11B (NP_002537.3).   |
| <b>Purification</b>  | Purified by affinity chromatography  |
| <b>Conjugation</b>   | Unconjugated   |

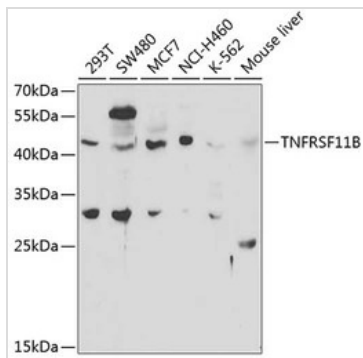
**Note**

For laboratory research use only. Not for any clinical, therapeutic, or diagnostic use in humans or animals. Not for animal or human consumption.

Purchasers shall not, and agree not to enable third parties to, analyze, copy, reverse engineer or otherwise attempt to determine the structure or sequence of the product.

For full product information, images and publications, please visit our [website](#).

DATA IMAGES

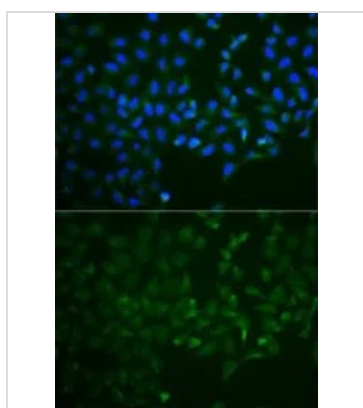


**GTX55734 WB Image**

WB analysis of various sample lysates using GTX55734 OPG antibody.

Dilution : 1:1000

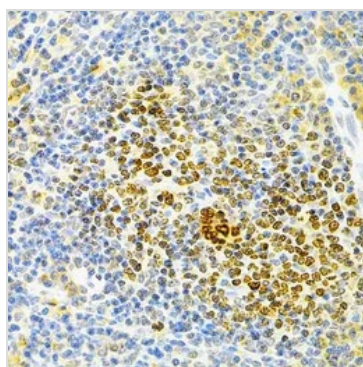
Loading : 25µg per lane



**GTX55734 ICC/IF Image**

ICC/IF analysis of HeLa cells using GTX55734 OPG antibody.

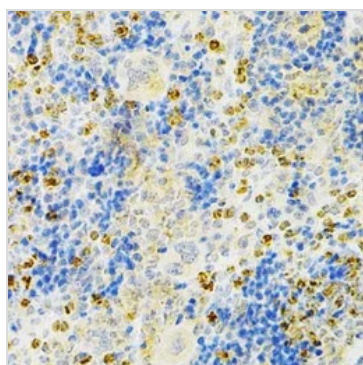
Blue : DAPI



**GTX55734 IHC-P Image**

IHC-P analysis of rat spleen tissue using GTX55734 OPG antibody.

Dilution : 1:200



**GTX55734 IHC-P Image**

IHC-P analysis of mouse spleen tissue using GTX55734 OPG antibody.

Dilution : 1:200



For full product information, images and publications, please visit our [website](#).