

TMS1 antibody

Cat. No. GTX55818

Host	Rabbit
Clonality	Polyclonal
Isotype	IgG
Applications	WB, ICC/IF, IHC-P, IHC-Fr
Reactivity	Human, Mouse, Rat

References (8)

Package

100 µl

Applications

Application Note

*Optimal dilutions/concentrations should be determined by the researcher.

Suggested dilution	Recommended dilution
WB	1:500 - 1:2000
ICC/IF	1:50 - 1:200
IHC-P	Assay dependent
IHC-Fr	Assay dependent

Not tested in other applications.

Calculated MW 22 kDa. ([Note](#))

Properties

Form	Liquid
Buffer	PBS, 50% Glycerol
Preservative	0.02% Sodium azide
Storage	Store as concentrated solution. Centrifuge briefly prior to opening vial. For short-term storage (1-2 weeks), store at 4°C. For long-term storage, aliquot and store at -20°C or below. Avoid multiple freeze-thaw cycles.
Concentration	Batch dependent (Please refer to the vial label for the specific concentration.)
Immunogen	Recombinant fusion protein containing a sequence corresponding to amino acids 50-195 of human PYCARD (NP_037390.2).
Purification	Purified by affinity chromatography
Conjugation	Unconjugated



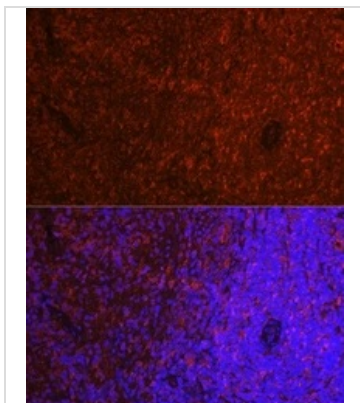
For full product information, images and publications, please visit our [website](#).

For laboratory research use only. Not for any clinical, therapeutic, or diagnostic use in humans or animals. Not for animal or human consumption.

Note

Purchasers shall not, and agree not to enable third parties to, analyze, copy, reverse engineer or otherwise attempt to determine the structure or sequence of the product.

DATA IMAGES

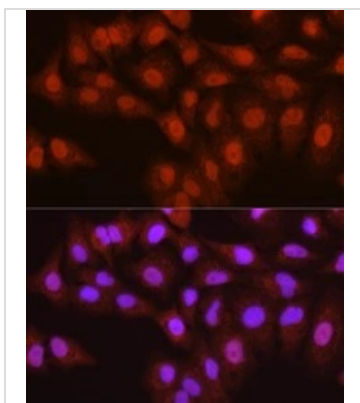


GTx55818 IHC-P Image

IHC-P analysis of rat spleen tissue using GTx55818 TMS1 antibody.

Dilution : 1:250

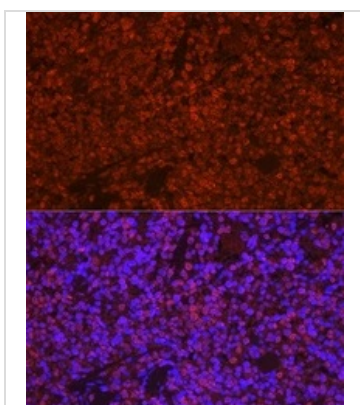
Blue : DAPI



GTx55818 ICC/IF Image

ICC/IF analysis of A549 cells using GTx55818 TMS1 antibody.

Dilution : 1:250



GTx55818 IHC-P Image

IHC-P analysis of mouse spleen tissue using GTx55818 TMS1 antibody.

Dilution : 1:250

Blue : DAPI



For full product information, images and publications, please visit our [website](https://www.genetex.com).