

p15 INK4b antibody

Cat No. GTX55855

Host	Rabbit
Clonality	Polyclonal
Isotype	IgG
Application	WB, ICC/IF, IHC-P
Reactivity	Human, Mouse, Rat

Package
100 µl

APPLICATION

Application Note

*Optimal dilutions/concentrations should be determined by the researcher.

Suggested dilution	Dilution
WB	1:500 - 1:1000
ICC/IF	1:100 - 1:500
IHC-P	1:100 - 1:200

Not tested in other applications.

Calculated MW 15 kDa. ([Note](#))

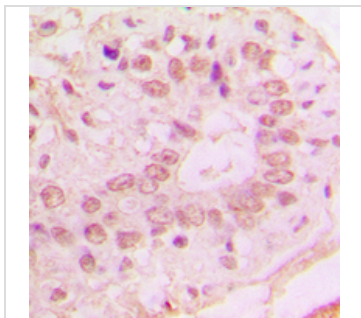
PROPERTIES

Form	Liquid
Buffer	0.42% Potassium phosphate, 0.87% Sodium chloride pH 7.3, 30% glycerol, 0.01% sodium azide
Storage	Store as concentrated solution. Centrifuge briefly prior to opening vial. For short-term storage (1-2 weeks), store at 4°C. For long-term storage, aliquot and store at -20° C or below. Avoid multiple freeze-thaw cycles.
Concentration	Batch dependent (Please refer to the vial label for the specific concentration.)
Immunogen	KLH-conjugated synthetic peptide encompassing a sequence within the C-term region of p15 INK4b. The exact sequence is proprietary.
Purification	Purified by antigen-affinity chromatography
Conjugation	Unconjugated
Note	For laboratory use only. Not for any clinical, therapeutic, or diagnostic use in humans or animals. Not for animal or human consumption.

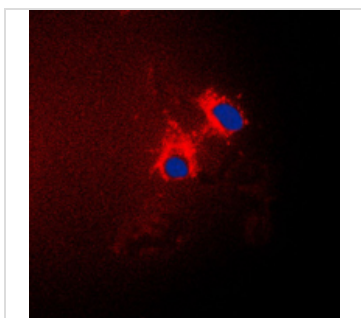


For full product information, images and publications, please visit our [website](#).

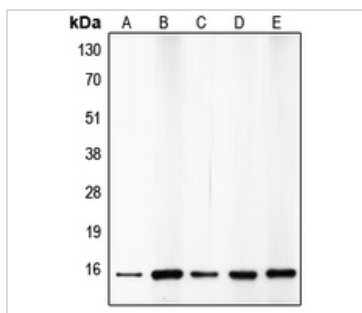
DATA IMAGES

**GTX55855 IHC-P Image**

IHC-P analysis of formalin fixed human lung cancer tissue section using GTX55855 p15 INK4b antibody.
Antigen retrieval : Heat mediated antigen retrieval with sodium citrate buffer (pH 6.0)

**GTX55855 ICC/IF Image**

ICC/IF analysis of formalin-fixed A549 cells using GTX55855 p15 INK4b antibody.
Red : Primary antibody
Blue : DAPI
Permeabilization : 0.1% Triton X-100 in TBS for 5-10 minutes

**GTX55855 WB Image**

WB analysis of HepG2 (A), A549 (B), HeLa (C), mouse brain (D), rat kidney (E) whole cell lysates using GTX55855 p15 INK4b antibody.



For full product information, images and publications, please visit our [website](#).