

## GPX2 antibody, Internal

**Cat. No. GTX56140**

<b>Host</b>	Goat
<b>Clonality</b>	Polyclonal
<b>Isotype</b>	IgG
<b>Applications</b>	WB
<b>Reactivity</b>	Human

**Package**  
100 µg

### Applications

#### Application Note

\*Optimal dilutions/concentrations should be determined by the researcher.

Suggested dilution	Recommended dilution
WB	0.5-2µg/ml

Not tested in other applications.

**Calculated MW** 22 kDa. ( [Note](#) )

### Properties

<b>Form</b>	Liquid
<b>Buffer</b>	TBS, 0.5% BSA
<b>Preservative</b>	0.02% Sodium azide
<b>Storage</b>	Store as concentrated solution. Centrifuge briefly prior to opening vial. For short-term storage (1-2 weeks), store at 4°C. For long-term storage, aliquot and store at -20°C or below. Avoid multiple freeze-thaw cycles.
<b>Concentration</b>	0.50 mg/ml (Please refer to the vial label for the specific concentration.)
<b>Immunogen</b>	Peptide with sequence C-SLDGEKVDFN, from the internal region of the protein sequence according to NP_002074.2.
<b>Purification</b>	Purified by ammonium sulphate precipitation followed by antigen affinity chromatography
<b>Conjugation</b>	Unconjugated

#### Note

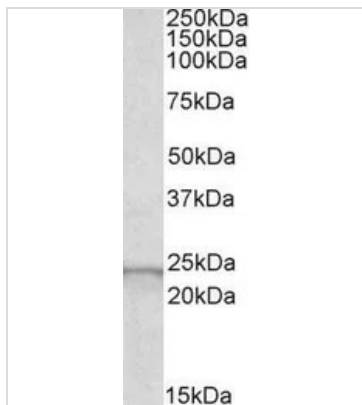
For laboratory research use only. Not for any clinical, therapeutic, or diagnostic use in humans or animals. Not for animal or human consumption.

Purchasers shall not, and agree not to enable third parties to, analyze, copy, reverse engineer or otherwise attempt to determine the structure or sequence of the product.



For full product information, images and publications, please visit our [website](#).

## DATA IMAGES



### GTX56140 WB Image

WB analysis of human liver lysate using GTX56140 GPX2 antibody, Internal.

Dilution : 0.5µg/ml

Loading : 30µg protein in RIPA buffer



For full product information, images and publications, please visit our [website](#).