

## EP300 antibody

Cat. No. GTX56157

|              |                   |
|--------------|-------------------|
| Host         | Rabbit            |
| Clonality    | Polyclonal        |
| Isotype      | IgG               |
| Applications | WB, IHC-P         |
| Reactivity   | Human, Mouse, Rat |

References ( 1 )

Package

100 µl

## Applications

## Application Note

\*Optimal dilutions/concentrations should be determined by the researcher.

| Suggested dilution | Recommended dilution |
|--------------------|----------------------|
| WB                 | 1:500 - 1:1000       |
| IHC-P              | 1:100 - 1:200        |

Not tested in other applications.

Calculated MW 264 kDa. ( [Note](#) )

## Properties

|               |  |
|---------------|--|
| Form          | Liquid   |
| Buffer        | 0.42% Potassium Phosphate, 0.87% NaCl, 30% Glycerol  |
| Preservative  | 0.01% Sodium azide   |
| Storage       | Store as concentrated solution. Centrifuge briefly prior to opening vial. For short-term storage (1-2 weeks), store at 4°C. For long-term storage, aliquot and store at -20°C or below. Avoid multiple freeze-thaw cycles. |
| Concentration | Batch dependent (Please refer to the vial label for the specific concentration.)   |
| Immunogen     | KLH-conjugated synthetic peptide encompassing a sequence within the N-term region of EP300. The exact sequence is proprietary.   |
| Purification  | Purified by antigen-affinity chromatography  |
| Conjugation   | Unconjugated   |

## Note

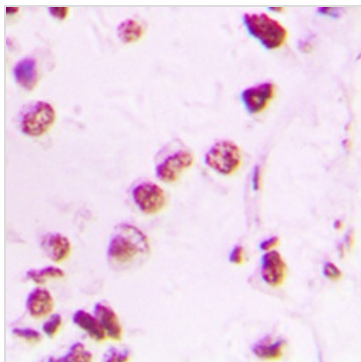
For laboratory research use only. Not for any clinical, therapeutic, or diagnostic use in humans or animals. Not for animal or human consumption.

Purchasers shall not, and agree not to enable third parties to, analyze, copy, reverse engineer or otherwise attempt to determine the structure or sequence of the product.



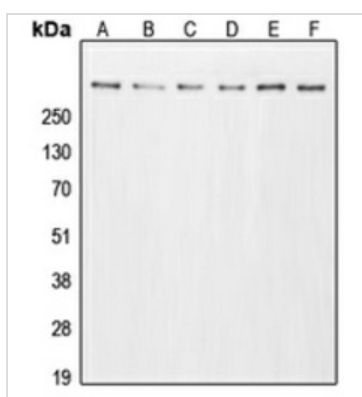
For full product information, images and publications, please visit our [website](#).

## DATA IMAGES



### GTX56157 IHC-P Image

IHC-P analysis of formalin fixed human lung cancer tissue section using GTX56157 EP300 antibody.  
Antigen retrieval : Heat mediated antigen retrieval with sodium citrate buffer (pH 6.0)



### GTX56157 WB Image

WB analysis of A431 (A), HeLa (B), HT29 (C), A549 (D), NIH3T3 (E), PC12 (F) whole cell lysates using GTX56157 EP300 antibody.



For full product information, images and publications, please visit our [website](https://www.genetex.com).