

## Cytochrome P450 2D6 antibody

Cat. No. GTX56286

|              |                   |
|--------------|-------------------|
| Host         | Rabbit            |
| Clonality    | Polyclonal        |
| Isotype      | IgG               |
| Applications | WB                |
| Reactivity   | Human, Mouse, Rat |

References ( 2 )

Package

100 µl

## Applications

## Application Note

\*Optimal dilutions/concentrations should be determined by the researcher.

| Suggested dilution                | Recommended dilution |
|-----------------------------------|----------------------|
| WB                                | 1:500 - 1:1000       |
| Not tested in other applications. |                      |

Calculated MW 56 kDa. ( [Note](#) )

## Properties

|               |  |
|---------------|--|
| Form          | Liquid   |
| Buffer        | 0.42% Potassium Phosphate, 0.87% NaCl, 30% Glycerol  |
| Preservative  | 0.01% Sodium azide   |
| Storage       | Store as concentrated solution. Centrifuge briefly prior to opening vial. For short-term storage (1-2 weeks), store at 4°C. For long-term storage, aliquot and store at -20°C or below. Avoid multiple freeze-thaw cycles. |
| Concentration | Batch dependent (Please refer to the vial label for the specific concentration.)   |
| Immunogen     | KLH-conjugated synthetic peptide encompassing a sequence within the center region of Cytochrome P450 2D6. The exact sequence is proprietary.   |
| Purification  | Purified by antigen-affinity chromatography  |
| Conjugation   | Unconjugated   |

## Note

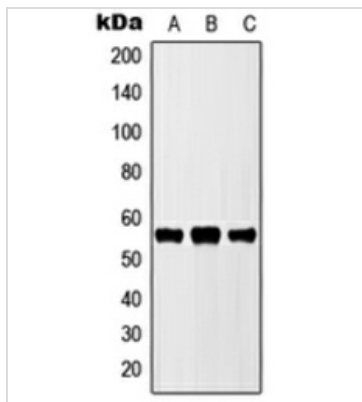
For laboratory research use only. Not for any clinical, therapeutic, or diagnostic use in humans or animals. Not for animal or human consumption.

Purchasers shall not, and agree not to enable third parties to, analyze, copy, reverse engineer or otherwise attempt to determine the structure or sequence of the product.



For full product information, images and publications, please visit our [website](#).

## DATA IMAGES



### GTX56286 WB Image

WB analysis of MCF7 (A), NIH3T3 (B), H9C2 (C) whole cell lysates using GTX56286 Cytochrome P450 2D6 antibody.



For full product information, images and publications, please visit our [website](#).