

## TLR4 antibody [76B357.1]

## Cat. No. GTX57153

<b>Host</b>	Mouse
<b>Clonality</b>	Monoclonal
<b>Isotype</b>	IgG2b
<b>Applications</b>	WB, ICC/IF, IHC-P, IHC-Fr, FCM, ChIP assay, in vitro, MS
<b>Reactivity</b>	Human, Mouse, Rat, Bovine, Hamster, Pig, Baboon

References ( 4 )

Package

100 µg

## Applications

## Application Note

\*Optimal dilutions/concentrations should be determined by the researcher.

Suggested dilution	Recommended dilution
WB	1 - 3 µg/ml
ICC/IF	1:10 - 1:500
IHC-P	5 µg/ml
IHC-Fr	1:500
FCM	Assay dependent
ChIP assay	1:10 - 1:500
in vitro	Assay dependent
MS	Assay dependent

Not tested in other applications.

**Calculated MW** 96 kDa. ( [Note](#) )

## Properties

<b>Form</b>	Liquid
<b>Buffer</b>	PBS
<b>Preservative</b>	0.05% Sodium azide
<b>Storage</b>	Store as concentrated solution. Centrifuge briefly prior to opening vial. For short-term storage (1-2 weeks), store at 4°C. For long-term storage, aliquot and store at -20°C or below. Avoid multiple freeze-thaw cycles.
<b>Concentration</b>	1 mg/ml (Please refer to the vial label for the specific concentration.)
<b>Immunogen</b>	This antibody was developed against a portion of amino acids 100-200 of human TLR4 (NP_612564).
<b>Purification</b>	Protein G purified



For full product information, images and publications, please visit our [website](#).

**Conjugation**

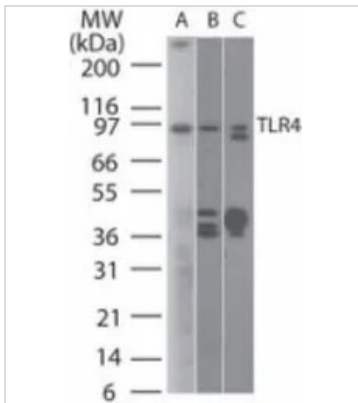
Unconjugated

For laboratory research use only. Not for any clinical, therapeutic, or diagnostic use in humans or animals. Not for animal or human consumption.

**Note**

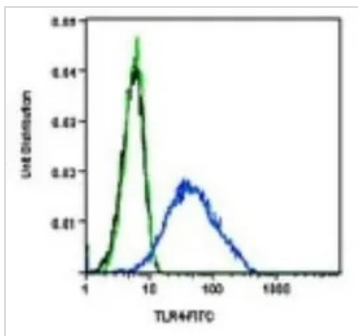
Purchasers shall not, and agree not to enable third parties to, analyze, copy, reverse engineer or otherwise attempt to determine the structure or sequence of the product.

## DATA IMAGES

**GTX57153 WB Image**

WB analysis of (A) human (B) mouse, and (C) rat intestine tissue lysate using GTX57153 TLR4 antibody [76B357.1].

Dilution : 2 µg/ml(A) ; 6µg/ml(B and C)

**GTX57153 FCM Image**

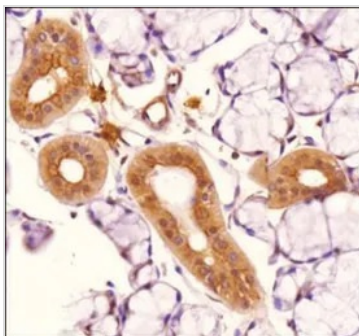
FACS analysis of human monocyte-derived dendritic cells using GTX57153 TLR4 antibody [76B357.1].

Blue : Primary antibody

Green : negative control

Black : unstained cells

Dilution : 1:200

**GTX57153 IHC-P Image**

IHC-P analysis of rat salivary gland tissue using GTX57153 TLR4 antibody [76B357.1].

Dilution : 1:100



For full product information, images and publications, please visit our [website](#).