

SDCCAG8 antibody

Cat. No. GTX57169

Host	Goat
Clonality	Polyclonal
Isotype	IgG
Applications	WB, IHC-P, ELISA
Reactivity	Human

Package
100 µg

Applications

Application Note

*Optimal dilutions/concentrations should be determined by the researcher.

Suggested dilution	Recommended dilution
WB	0.3-1µg/ml
IHC-P	5µg/ml
ELISA	1:128000

Note : Approx 80kDa band observed in lysates of cell line HEK293.

Not tested in other applications.

Calculated MW 83 kDa. ([Note](#))

Properties

Form	Liquid
Buffer	TBS, 0.5% BSA
Preservative	0.02% Sodium azide
Storage	Store as concentrated solution. Centrifuge briefly prior to opening vial. For short-term storage (1-2 weeks), store at 4°C. For long-term storage, aliquot and store at -20°C or below. Avoid multiple freeze-thaw cycles.
Concentration	0.50 mg/ml (Please refer to the vial label for the specific concentration.)
Immunogen	Peptide with sequence C-TINDQSQYIHHLEAE, from the internal region of the protein sequence according to NP_006633.1.
Purification	Ammonium sulphate precipitation followed by antigen affinity chromatography. From serum
Conjugation	Unconjugated



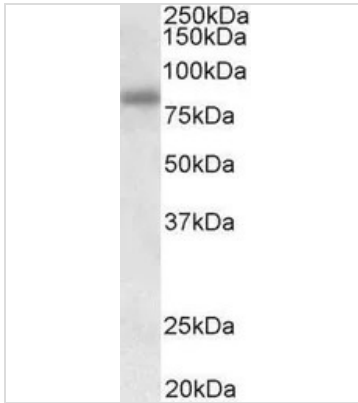
For full product information, images and publications, please visit our [website](#).

For laboratory research use only. Not for any clinical, therapeutic, or diagnostic use in humans or animals. Not for animal or human consumption.

Note

Purchasers shall not, and agree not to enable third parties to, analyze, copy, reverse engineer or otherwise attempt to determine the structure or sequence of the product.

DATA IMAGES

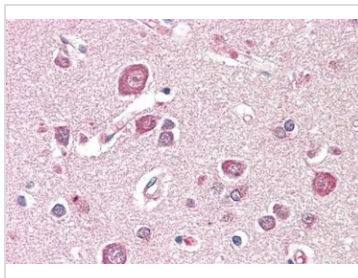


GTX57169 WB Image

WB analysis of HEK293 cell lysate using GTX57169 SDCCAG8 antibody.

Dilution : 0.3µg/ml

Loading : 35µg protein in RIPA buffer



GTX57169 IHC-P Image

IHC-P analysis of human cortex tissue using GTX57169 SDCCAG8 antibody.

Dilution : 5µg/ml

Antigen retrieval : citrate buffer pH 6



For full product information, images and publications, please visit our [website](#).