

# Ki67 antibody [IHC067]

**Cat. No. GTX57186**

<b>Host</b>	Mouse
<b>Clonality</b>	Monoclonal
<b>Isotype</b>	IgG2b
<b>Applications</b>	IHC-P
<b>Reactivity</b>	Human

**Package**  
500 µl

## Applications

### Application Note

\*Optimal dilutions/concentrations should be determined by the researcher.

Suggested dilution	Recommended dilution
IHC-P	1:100-1:200

**Note : Heat-induced epitope retrieval (HIER) at pH 9 for 10 - 30 minutes**

Not tested in other applications.

## Properties

<b>Form</b>	Liquid
<b>Buffer</b>	Tris, 1% BSA
<b>Preservative</b>	0.09% Sodium azide
<b>Storage</b>	Store as concentrated solution. Centrifuge briefly prior to opening vial. Store at 4°C. DO NOT FREEZE.
<b>Concentration</b>	Batch dependent (Please refer to the vial label for the specific concentration.)
<b>Immunogen</b>	Recombinant Human Ki-67 protein.
<b>Purification</b>	Protein A purified
<b>Conjugation</b>	Unconjugated

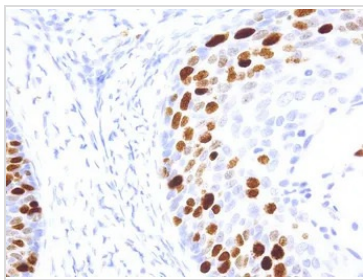
### Note

For laboratory research use only. Not for any clinical, therapeutic, or diagnostic use in humans or animals. Not for animal or human consumption.

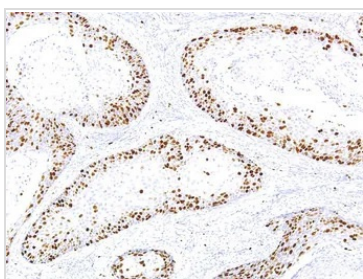
Purchasers shall not, and agree not to enable third parties to, analyze, copy, reverse engineer or otherwise attempt to determine the structure or sequence of the product.



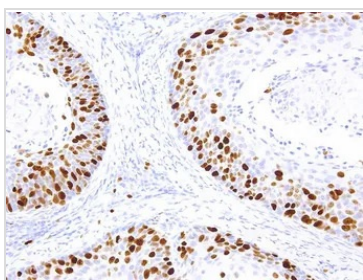
For full product information, images and publications, please visit our [website](#).

**DATA IMAGES**

**GTX57186 IHC-P Image**

IHC-P analysis of human cervical cancer tissue using GTX57186 Ki67 antibody [IHC067] (40X)


**GTX57186 IHC-P Image**

IHC-P analysis of human cervical cancer tissue using GTX57186 Ki67 antibody [IHC067] (10X)


**GTX57186 IHC-P Image**

IHC-P analysis of human cervical cancer tissue using GTX57186 Ki67 antibody [IHC067] (20X)



For full product information, images and publications, please visit our [website](#).