

## SOD1 (mutant) antibody [MS27]

Cat. No. GTX57212

Host	Rat
Clonality	Monoclonal
Isotype	IgG2a
Applications	WB, ICC/IF, IP, ELISA, IHC
Reactivity	Human

References ( 1 )

Package

200 µl

## Applications

## Application Note

\*Optimal dilutions/concentrations should be determined by the researcher.

Suggested dilution	Recommended dilution
WB	Assay dependent
ICC/IF	1 µg/ml (1/500 dilution) -5 µg/ml (1/100 dilution)
IP	1-5µg/sample
ELISA	Assay dependent
IHC	1 µg/ml (1/500 dilution) -5 µg/ml (1/100 dilution)

## Note : Target : SOD1 mutants

Target : SOD1 mutants under native condition ; Wild-type SOD1 under the zinc-deficient ER-stress. GTX57211 and GTX57212 could recognize not only mutants but also denatured SOD1. Please keep non-denatured condition and avoid to use high concentration of SDS or the other denaturing compounds.

Target : SOD1 mutants

Not tested in other applications.

Calculated MW	16 kDa. ( <a href="#">Note</a> )
Product Note	Clone MS785 and MS27, which specifically bind to conformationally altered SOD1 mutants, not detecting wild type SOD1 homo-dimer. Both clones are succeeded in specifically detecting over 100 SOD1 mutants (please see to Appendix for detail description).

Properties	
Form	Liquid
Buffer	PBS, 50% Glycerol
Preservative	No preservatives
Storage	Store as concentrated solution. Centrifuge briefly prior to opening vial. For short-term storage (1-2 weeks), store at 4°C. For long-term storage, aliquot and store at -20°C or below. Avoid multiple freeze-thaw cycles.
Concentration	0.5 mg/ml (Please refer to the vial label for the specific concentration.)



For full product information, images and publications, please visit our [website](#).

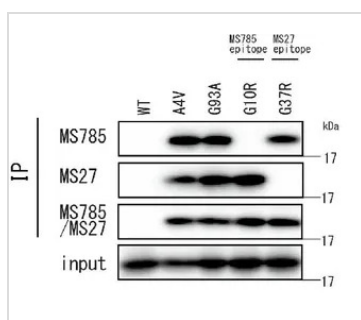
Date 2026 / 01 / 31 Page 1 of 2

<b>Immunogen</b>	Human SOD1 30-40 amino acids.
<b>Purification</b>	Protein G Purified.
<b>Conjugation</b>	Unconjugated

**Note**

For laboratory research use only. Not for any clinical, therapeutic, or diagnostic use in humans or animals. Not for animal or human consumption.

Purchasers shall not, and agree not to enable third parties to, analyze, copy, reverse engineer or otherwise attempt to determine the structure or sequence of the product.

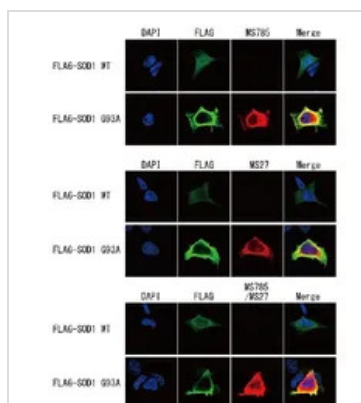
**DATA IMAGES**

**GTX57212 IP Image**

IP analysis of SOD1 wild type or mutants-expressing HEK293 cells using GTX57211 SOD1 (mutant) antibody [MS785], GTX57212 SOD1 (mutant) antibody [MS27], or MS785/MS27 cocktail. Neither MS785 nor MS27 single detected some specific mutants which have the mutation on the antibody's epitope. MS785/MS27 cocktail overcame this problem. Validated SOD1 mutants were listed in "Appendix".

Antibody amount :

MS27 (GTX57212): 2µg, MS785 (GTX57211): 5µg, or MS27/MS785 cocktail: 1µg

IP lysis buffer: 1% Triton X100/TBS buffer.

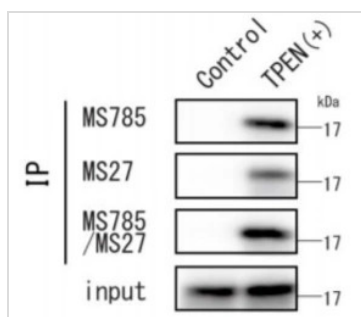

**GTX57212 ICC/IF Image**

ICC/IF analysis of Flag-tagged SOD1 wild type or G93A mutant-expressing HEK293 cells using GTX57211 SOD1 (mutant) antibody [MS785], GTX57212 SOD1 (mutant) antibody [MS27] or MS785/MS27 cocktail.

Fixation : 4% PFA for 10 min at RT.

Permeabilization : 0.2% Triton X-100 for 5 min

Dilution : 1µg/ml (12 hours at 4°C)


**GTX57212 IP Image**

IP analysis of HEK293 cells cultured in the presence and absence of 10µM TPEN (a potent zinc-specific chelator, for 8 hours) using GTX57211 SOD1 (mutant) antibody [MS785]. Under the zinc-deficient ER-stress, these antibodies could recognize endogenous SOD1 wild type with mutant like conformation.

Antibody amount : 1-5 µg



For full product information, images and publications, please visit our [website](https://www.genetex.com).