

## SOX18 antibody

Cat. No. GTX57216

Host	Rabbit
Clonality	Polyclonal
Isotype	IgG
Applications	WB, ICC/IF, IHC-P
Reactivity	Human, Mouse

Package  
100 µl

## Applications

## Application Note

\*Optimal dilutions/concentrations should be determined by the researcher.

Suggested dilution	Recommended dilution
WB	Assay dependent
ICC/IF	Assay dependent
IHC-P	Assay dependent

Not tested in other applications.

Calculated MW 41 kDa. ( [Note](#) )

## Properties

Form	Liquid
Buffer	PBS, 2% Sucrose
Preservative	0.09% Sodium azide
Storage	Store as concentrated solution. Centrifuge briefly prior to opening vial. For short-term storage (1-2 weeks), store at 4°C. For long-term storage, aliquot and store at -20°C or below. Avoid multiple freeze-thaw cycles.
Concentration	0.5 - 1 mg/ml (Please refer to the vial label for the specific concentration.)
Immunogen	The immunogen is a synthetic peptide directed towards the middle region of human SOX18 (RTAPPAAPLAGLYYGTGTPGYPGPLSPPEAPPLESAEPLGPAADLWA).
Purification	Purified by affinity chromatography
Conjugation	Unconjugated

## Note

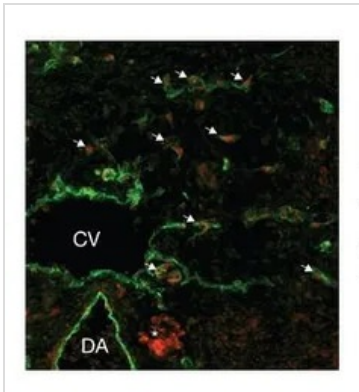
For laboratory research use only. Not for any clinical, therapeutic, or diagnostic use in humans or animals. Not for animal or human consumption.

Purchasers shall not, and agree not to enable third parties to, analyze, copy, reverse engineer or otherwise attempt to determine the structure or sequence of the product.



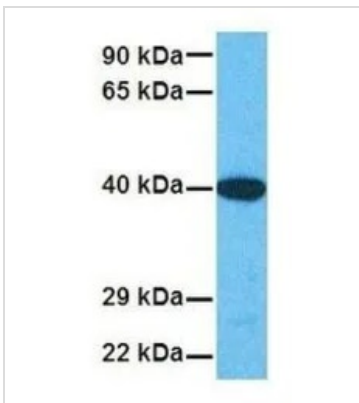
For full product information, images and publications, please visit our [website](#).

## DATA IMAGES



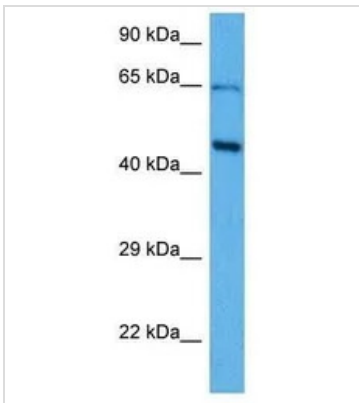
### GTX57216 ICC/IF Image

IHC-Fr analysis of developing mouse embryo tissue using GTX57216 SOX18 antibody.  
Dilution : 1:50 - 1:500



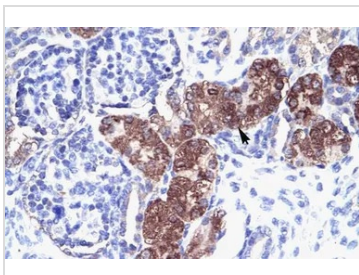
### GTX57216 WB Image

WB analysis of human fetal liver tissue lysate using GTX57216 SOX18 antibody.  
Dilution: 1.0µg/ml



### GTX57216 WB Image

WB analysis of mouse brain tissue lysate using GTX57216 SOX18 antibody.  
Dilution: 1.0µg/ml



### GTX57216 IHC-P Image

IHC-P analysis of human kidney using GTX57216 SOX18 antibody.  
Dilution : 4.0-8.0 µg/ml



For full product information, images and publications, please visit our [website](https://www.genetex.com).