

CD11b antibody [M1/70] (APC)

Cat. No. GTX57222

Host	Rat
Clonality	Monoclonal
Isotype	IgG2b
Applications	FCM
Reactivity	Human, Mouse, Baboon, Chimpanzee, Cynomolgus monkey, Rhesus Monkey

References (11)

Package

100 µg

PRODUCT

Summary

The M1/70 antibody reacts with human and mouse CD11b, also known as integrin α M. This 165-170 kDa cell surface glycoprotein is part of a family of integrin α receptors that mediate adhesion between cells (cell-cell) and components of the extracellular matrix, e.g. fibrinogen (cell-matrix). In addition, integrin α s are active signaling receptors which recruit leukocytes to inflammatory sites and promote cell activation. Complete, functional integrin α receptors consist of distinct combinations of integrin α chains which are differentially expressed. integrin α M (CD11b) assembles with integrin β 2 (CD18) into a receptor known as Macrophage Antigen-1 (Mac-1) or complement receptor type 3 (CR3). This receptor binds and induces intracellular signaling through ICAM-1 on endothelial cells and can also facilitate removal of iC3b bearing foreign cells.

Applications

Application Note

*Optimal dilutions/concentrations should be determined by the researcher.

Suggested dilution	Recommended dilution
FCM	Assay dependent

Not tested in other applications.

Properties

Form	Liquid
Buffer	10mM NaH ₂ PO ₄ , 150mM NaCl, 0.1% Gelatin
Preservative	0.09% Sodium azide
Storage	Store as concentrated solution. Centrifuge briefly prior to opening vial. Store at 4°C. DO NOT FREEZE. Protect from light.
Concentration	0.2 mg/ml (Please refer to the vial label for the specific concentration.)
Immunogen	B10 mouse spleen cells enriched for T cells
Purification	Purified by affinity chromatography From tissue culture supernatant
Conjugation	Allophycocyanin (APC) Wavelength



For full product information, images and publications, please visit our [website](#).

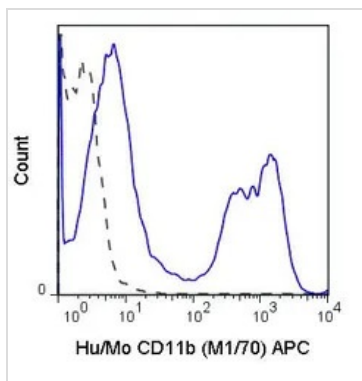
Date 2026 / 05 / 05 Page 1 of 2

For laboratory research use only. Not for any clinical, therapeutic, or diagnostic use in humans or animals. Not for animal or human consumption.

Note

Purchasers shall not, and agree not to enable third parties to, analyze, copy, reverse engineer or otherwise attempt to determine the structure or sequence of the product.

DATA IMAGES

**GTX57222 FCM Image**

FACS analysis of C57Bl/6 bone marrow cells using GTX57222 CD11b antibody [M1/70] (APC).

Solid line : Primary antibody

Dashed line : APC rat IgG2b isotype control

Antibody amount : 0.125 μ g



For full product information, images and publications, please visit our [website](#).