

RBPMS antibody

Cat. No. GTX57225

Host	Rabbit
Clonality	Polyclonal
Isotype	IgG
Applications	WB, ICC/IF, FCM, IHC
Reactivity	Human, Mouse, Rat, Rabbit, Guinea pig, Monkey

References (1)
 Package
 100 µl

Applications

Application Note

*Optimal dilutions/concentrations should be determined by the researcher.

Suggested dilution	Recommended dilution
WB	1:1000
ICC/IF	Assay dependent
FCM	Assay dependent
IHC	Assay dependent

Not tested in other applications.

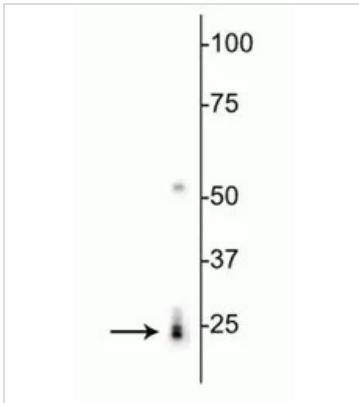
Properties

Form	Liquid
Buffer	PBS
Preservative	0.03% Sodium azide
Storage	Store as concentrated solution. Centrifuge briefly prior to opening vial. For short-term storage (1-2 weeks), store at 4°C. For long-term storage, aliquot and store at -20°C or below. Avoid multiple freeze-thaw cycles.
Concentration	Batch dependent (Please refer to the vial label for the specific concentration.)
Immunogen	The antigen is a synthetic peptide corresponding to amino acid residues from the N-terminal region of the rat RBPMS sequence conjugated to KLH.
Purification	Purified by antigen-affinity chromatography
Conjugation	Unconjugated
Note	For laboratory use only. Not for any clinical, therapeutic, or diagnostic use in humans or animals. Not for animal or human consumption.

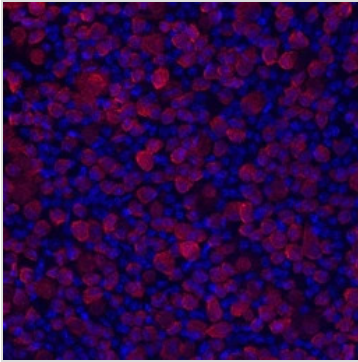


For full product information, images and publications, please visit our [website](#).

DATA IMAGES

**GTX57225 WB Image**

WB analysis of rat heart tissue lysate using GTX57225 RBPMS antibody.

**GTX57225 IHC Image**

IHC analysis of mouse retinal ganglion cells using GTX57225 RBPMS antibody.

Red : Primary antibody

Blue : DAPI



For full product information, images and publications, please visit our [website](#).