

## Biglycan antibody

Cat. No. GTX57229

Host	Rabbit
Clonality	Polyclonal
Isotype	IgG
Applications	WB, ICC/IF, IHC-P
Reactivity	Human, Mouse, Rabbit

Package  
100 µl

## Applications

## Application Note

\*Optimal dilutions/concentrations should be determined by the researcher.

Suggested dilution	Recommended dilution
WB	1:300-1:1000
ICC/IF	1:50-1:200
IHC-P	1:200-1:400

Not tested in other applications.

Calculated MW 42 kDa. ( [Note](#) )

## Properties

Form	Liquid
Buffer	1% BSA, 50% Glycerol
Preservative	0.09% Sodium azide
Storage	Store as concentrated solution. Centrifuge briefly prior to opening vial. For short-term storage (1-2 weeks), store at 4°C. For long-term storage, aliquot and store at -20°C or below. Avoid multiple freeze-thaw cycles.
Concentration	1 mg/ml (Please refer to the vial label for the specific concentration.)
Immunogen	KLH conjugated synthetic peptide derived from human Biglycan (120-170).
Purification	Protein A purified
Conjugation	Unconjugated

## Note

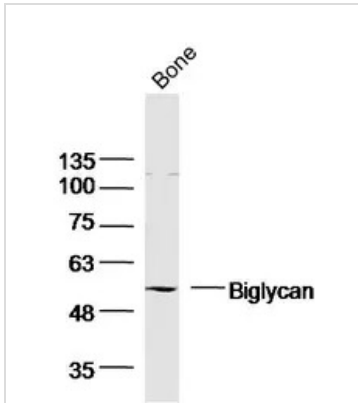
For laboratory research use only. Not for any clinical, therapeutic, or diagnostic use in humans or animals. Not for animal or human consumption.

Purchasers shall not, and agree not to enable third parties to, analyze, copy, reverse engineer or otherwise attempt to determine the structure or sequence of the product.



For full product information, images and publications, please visit our [website](#).

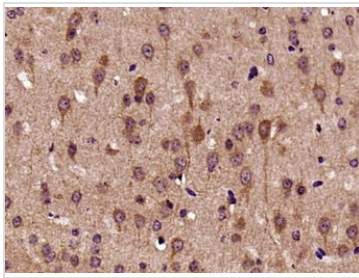
## DATA IMAGES



### GTx57229 WB Image

WB analysis of mouse bone tissue lysate using GTx57229 Uteroglobulin antibody.

Dilution : 1:300

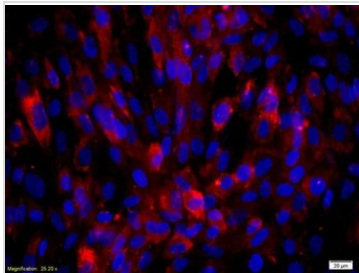


### GTx57229 IHC-P Image

IHC-P analysis of mouse brain tissue using GTx57229 Uteroglobulin antibody.

Antigen retrieval : boiling in sodium citrate buffer (pH6) for 15min.

Dilution : 1:400

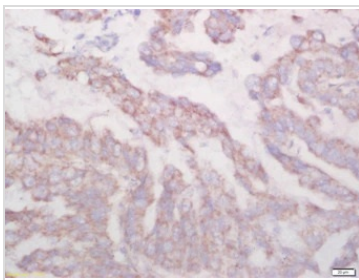


### GTx57229 ICC/IF Image

ICC/IF analysis of human endothelial cells using GTx57229 Uteroglobulin antibody.

Dilution : 1:50

Fixation: 4% PFA



### GTx57229 IHC-P Image

IHC-P analysis of human lung carcinoma tissue using GTx57229 Uteroglobulin antibody.

Dilution : 1:200



For full product information, images and publications, please visit our [website](https://www.genetex.com).