

Human SH2D1B protein, His tag

Cat. No. GTX57307-pro

Species	Human
---------	-------

Package

50 µg

Applications

Observed MW (kDa)	18 kDa.
-------------------	---------

Properties

Form	Liquid
------	--------

Buffer	PBS, 20% Glycerol
--------	-------------------

Preservative	No preservatives
--------------	------------------

Storage	Store as concentrated solution. Centrifuge briefly prior to opening vial. For short-term storage (1-2 weeks), store at 4°C. For long-term storage, aliquot and store at -20°C or below. Avoid multiple freeze-thaw cycles.
---------	--

Concentration	0.25 mg/ml (Please refer to the vial label for the specific concentration.)
---------------	---

Region/Sequence	Full length protein, C-terminal His-Tag; ADPMDLPYYH GRLTKQDCET LLLKEGVDGN FLLRDSSESIP GVLCLCVSFK NIVYTYRIFR EKHGYRIQT AEGSPKQVFP SLKELISKFE KPNQGMWHL LKPIKRTSPS LRWRGLKLEL ETFVNSNSDY VDVLPHHHHH H
-----------------	---

Expression System	Baculovirus
-------------------	-------------

Purity	> 90% by SDS-PAGE.
--------	--------------------

Endotoxin	< 1.0 EU/µg (determined by LAL method)
-----------	--

Conjugation	Unconjugated
-------------	--------------

Note

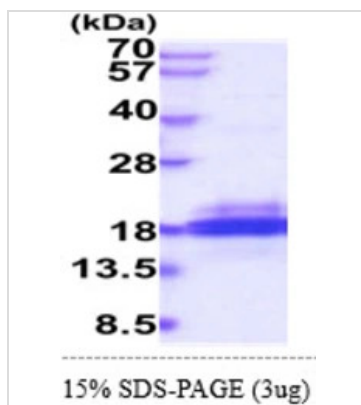
For laboratory research use only. Not for any clinical, therapeutic, or diagnostic use in humans or animals. Not for animal or human consumption.

Purchasers shall not, and agree not to enable third parties to, analyze, copy, reverse engineer or otherwise attempt to determine the structure or sequence of the product.



For full product information, images and publications, please visit our [website](#).

DATA IMAGES



GTX57307-pro Image

3µg Human SH2D1B protein (GTX57307-pro) by SDS-PAGE under reducing condition and visualized by coomassie blue stain.



For full product information, images and publications, please visit our [website](#).