

Human HDGFL1 protein, His tag

Cat. No. GTX57368-pro

Species Human

Package
20 µg

APPLICATION

Observed MW 27 kDa.

PROPERTIES

Form Liquid

Buffer PBS, 10% Glycerol

Preservative No preservative

Storage Store as concentrated solution. Centrifuge briefly prior to opening vial. For short-term storage (1-2 weeks), store at 4°C. For long-term storage, aliquot and store at -20°C or below. Avoid multiple freeze-thaw cycles.

Concentration 0.25 mg/ml (Please refer to the vial label for the specific concentration.)

Region/Sequence Full length protein, N-terminal His-Tag; MGSSHHHHHH SSGLVPRGSH MGSM SAYGMP MYKSGDLVFA KLKGYAHWPA RIEHMTQPNR YQVFFGTG THE TAF LSPKRLF PYKECKEKF G KPNKRRGFSA GLWEIENNPT VQASDCPLAS EKGSGDGPWP EPEAAEGDED KPTHAGGGGD ELGKPD DDKP TEEKGPLKR SAGDPPEDAP KRPKEAAPDQ EEEAE AERAA EAERAAAAAA ATAVDEESPF LVA VENG SAP SEPGLVCEPP QPEEEELREE EVADEEASQE WHAEAPGGGD RDSL

Expression System E. coli

Purity > 95% by SDS-PAGE.

Conjugation Unconjugated

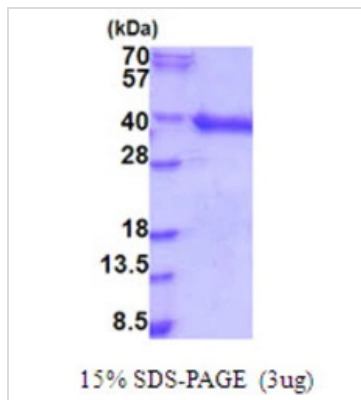
Note For laboratory research use only. Not for any clinical, therapeutic, or diagnostic use in humans or animals. Not for animal or human consumption.

Purchasers shall not, and agree not to enable third parties to, analyze, copy, reverse engineer or otherwise attempt to determine the structure or sequence of the product.



For full product information, images and publications, please visit our [website](#).

DATA IMAGES



GTX57368-pro Image

3μg Human HDGFL1 protein (GTX57368-pro) by SDS-PAGE under reducing condition and visualized by coomassie blue stain.



For full product information, images and publications, please visit our [website](#).