

Human Phosphatase orphan 2 protein, His tag

Cat. No. GTX57440-pro
Species Human

Package

50 µg

Applications
Observed MW (kDa) 28 kDa.

Properties
Form Liquid

Buffer 20mM Tris-HCl, 100mM NaCl, 10% Glycerol, 1mM DTT

Preservative No preservatives

Storage Store as concentrated solution. Centrifuge briefly prior to opening vial. For short-term storage (1-2 weeks), store at 4°C. For long-term storage, aliquot and store at -20°C or below. Avoid multiple freeze-thaw cycles.

Concentration 0.25 mg/ml (Please refer to the vial label for the specific concentration.)

Region/Sequence Full length protein, N-terminal His-Tag; MGSSHHHHHH SSGLVPRGSH MGSHMKILLV FDFDNTIIDD NSDTWIVQCA PNKKLPIELR DSYRKGFWTE FMGRVFKYLG DKGVREHEMK RAVTSLPFTP GMVELNFIR KNKDKFDCII ISDSNSVFID WVLEAASFHD IFDKVFTNPA AFNSNGHLTV ENYHTHSCNR CPKNLCKKVV LIEFVDKQLQ QGVNYTQIVY IGDGGNDVCP VTFLKND DVA MPRKGYTLQK TLRMSQNL E PMEYSVVVWS SGVDIISHLQ FLIKD

Expression System E. coli

Purity > 85% by SDS-PAGE.

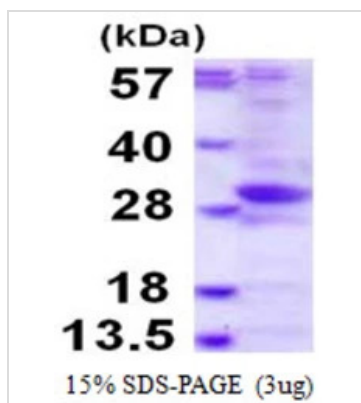
Conjugation Unconjugated

Note For laboratory research use only. Not for any clinical, therapeutic, or diagnostic use in humans or animals. Not for animal or human consumption.

Purchasers shall not, and agree not to enable third parties to, analyze, copy, reverse engineer or otherwise attempt to determine the structure or sequence of the product.


For full product information, images and publications, please visit our [website](#).

DATA IMAGES



GTX57440-pro Image

3μg Human Phosphatase orphan 2 protein (GTX57440-pro) by SDS-PAGE under reducing condition and visualized by coomassie blue stain.



For full product information, images and publications, please visit our [website](#).