

E. coli hchA protein, His tag

Cat. No. GTX57473-pro

Species E. coli

Package
100 µg

Applications

Observed MW (kDa) 31 kDa.

Properties

Form Liquid

Buffer 20mM Tris-HCl, 100mM NaCl, 20% Glycerol, 1mM DTT

Preservative No preservatives

Storage Store as concentrated solution. Centrifuge briefly prior to opening vial. For short-term storage (1-2 weeks), store at 4°C. For long-term storage, aliquot and store at -20°C or below. Avoid multiple freeze-thaw cycles.

Concentration 1 mg/ml (Please refer to the vial label for the specific concentration.)

Region/Sequence
Full length protein, N-terminal His-Tag; MGSSHHHHHH SSSLVPRGSH MTVQTSKNPQ VDAIEDNAFF PSEYSLSQYT SPVSDLDGVD YPKPYRGKHK ILVIAADERY LPTDNGKLF S TGNHPITLL PLYHLHAAGF EFEVATISGL MTKFEYWAMP HKDEKVMPPF EQHKSLFRNP KKLADWASL NADSEYAAIF VPGGHGALIG LPESQDVAAA LQWAIKNDRF VISLCHGPAA FLALRHGDNP LNGYSICAFP DAADKQTPEI GYMPGHLTWY FGEELKKMGM NIINDDITGR VHKDRKLLTG DSPFAANALG KLA AQEMLAA YAG

Expression System E. coli

Purity > 95% by SDS-PAGE.

Conjugation Unconjugated

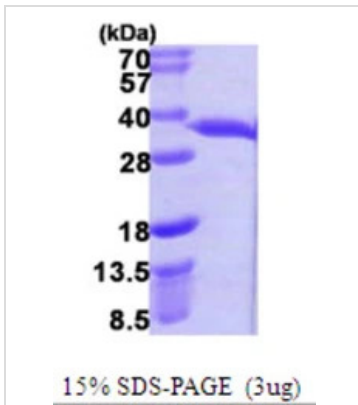
Note For laboratory research use only. Not for any clinical, therapeutic, or diagnostic use in humans or animals. Not for animal or human consumption.

Purchasers shall not, and agree not to enable third parties to, analyze, copy, reverse engineer or otherwise attempt to determine the structure or sequence of the product.



For full product information, images and publications, please visit our [website](#).

DATA IMAGES

**GTX57473-pro Image**

3 μ g hchA protein (GTX57473-pro) by SDS-PAGE under reducing condition and visualized by coomassie blue stain.



For full product information, images and publications, please visit our [website](#).