

E. coli glk protein, His tag

Cat. No. GTX57476-pro
Species E. coli

Package
100 µg

Applications
Observed MW (kDa) 35 kDa.

Properties
Form Liquid

Buffer 20mM Tris-HCl, 150mM NaCl, 10% Glycerol

Preservative No preservatives

Storage Store as concentrated solution. Centrifuge briefly prior to opening vial. For short-term storage (1-2 weeks), store at 4°C. For long-term storage, aliquot and store at -20°C or below. Avoid multiple freeze-thaw cycles.

Concentration 1 mg/ml (Please refer to the vial label for the specific concentration.)

Region/Sequence

Full length protein, N-terminal His-Tag; MGSSHHHHHH SSSLVPRGSH MGSMTKYALV GDVGGTNARL ALCDIASGEI
 SQAKTYSGLD YPSLEAVIRV YLEEHKVEVK DGCIAIACPI TGDWVAMTNI TWAFSIAEMK KNLGFSHLEI INDFTAVSMA
 IPMLKKEHLI QFGGAEPVEG KPIAVYGAGT GLGVAHLVHV DKRWVSLPGE GGHVDFAPNS EEEAIIILEIL RAEIGHVSAE
 RVLSGPGLVN LYRAIVKADN RLPENLKPDK ITERALADSC TDCRRALSLF CVIMGRFGGN LALNLGTFGG VFIAGGIVPR FLEFFKASGF
 RAAFEDKGRF KEYVHDIPVY LIVHDNPGLL GSGAHLRQTL GHIL

Expression System E. coli

Purity > 95% by SDS-PAGE.

Conjugation Unconjugated

Note

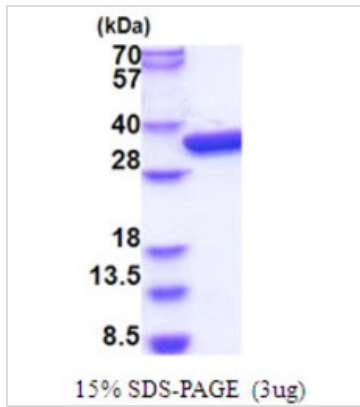
For laboratory research use only. Not for any clinical, therapeutic, or diagnostic use in humans or animals. Not for animal or human consumption.

Purchasers shall not, and agree not to enable third parties to, analyze, copy, reverse engineer or otherwise attempt to determine the structure or sequence of the product.



For full product information, images and publications, please visit our [website](#).

DATA IMAGES

**GTX57476-pro Image**

3 μ g glk protein (GTX57476-pro) by SDS-PAGE under reducing condition and visualized by coomassie blue stain.



For full product information, images and publications, please visit our [website](#).