

E. coli phrB protein, His tag

Cat. No. GTX57479-pro

Species E. coli

Package

20 µg

Applications

Observed MW (kDa) 54 kDa.

Properties

Form Liquid

Buffer 20mM Tris-HCl, 200mM NaCl, 50% Glycerol, 1mM DTT

Preservative No preservatives

Storage Store as concentrated solution. Centrifuge briefly prior to opening vial. For short-term storage (1-2 weeks), store at 4°C. For long-term storage, aliquot and store at -20°C or below. Avoid multiple freeze-thaw cycles.

Concentration 0.25 mg/ml (Please refer to the vial label for the specific concentration.)

Region/Sequence

Full length protein, N-terminal His-Tag; MGSSHHHHHH SSGLVPRGSH MGSMTTHLW FRQDLRLHDN LALAAACRNS SARVLALYIA TPRQWATHNM SPRQAEINA QLNGLQIALA EKGIPLLFRE VDDFVASVEI VKQVCAENSV THLFYNYQYE VNERARDVEV ERALRNVVCE GFDDSVLPP GAVMTGNHEM YKVFTPFKNA WLKRLREGMP ECVAAPKVRS SGSIEPSPSI TLNYPRQSF DTAHFPVEEKA AIAQLRQFCQ NGAGEYEQQR DFPAVEGTSR LSASLATGGL SPRQLHRLLL AEQPQALDGG AGSVWLNELI WREFYRHLIT YHPSLCKHRP FIAWTDVQW QSNPAHLQAW QEGKTGYPIV DAAMRQLNST GWMHNRLRMI TASFLVKDLL IDWREGERYF MSQLIDGDLA ANNGGWQWAA STGTDAAPYF RIFNPTTQGE KFDHEGEFIR QWLPELRDVP GKVVHEPWKW AQKAGVTLDY PQPIVEHKEA RVQTLAAYEA ARKGGK

Expression System E. coli

Purity > 90% by SDS-PAGE.

Conjugation Unconjugated

Note

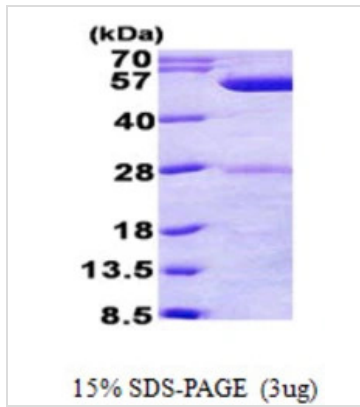
For laboratory research use only. Not for any clinical, therapeutic, or diagnostic use in humans or animals. Not for animal or human consumption.

Purchasers shall not, and agree not to enable third parties to, analyze, copy, reverse engineer or otherwise attempt to determine the structure or sequence of the product.



For full product information, images and publications, please visit our [website](#).

DATA IMAGES

**GTX57479-pro Image**

3 μ g phrB protein (GTX57479-pro) by SDS-PAGE under reducing condition and visualized by coomassie blue stain.



For full product information, images and publications, please visit our [website](#).