

# E. coli nanA protein, His tag

**Cat. No. GTX57487-pro**
**Species** E. coli

**Package**  
100 µg

**Applications**
**Observed MW (kDa)** 33 kDa.

**Properties**
**Form** Liquid

**Buffer** 20mM Tris-HCl, 20% Glycerol

**Preservative** No preservatives

**Storage** Store as concentrated solution. Centrifuge briefly prior to opening vial. For short-term storage (1-2 weeks), store at 4°C. For long-term storage, aliquot and store at -20°C or below. Avoid multiple freeze-thaw cycles.

**Concentration** 1 mg/ml (Please refer to the vial label for the specific concentration.)

**Region/Sequence**

Full length protein, N-terminal His-Tag; MGSSHHHHHH SSSLVPRGSH MATNLRGVMA ALLTPFDQQQ ALDKASLRRL VQFNIQQGID GLYVGGSTGE AFVQSLSERE QVLEIVAEEA KGKIKLIAHV GCVSTAESQQ LAASAKRYGF DAVSAVTPFY YPFSFEHCD HYRAIIDSAD GLPMVVYNIP ALSGVKLTLD QINTLVTLPG VGALKQTSKD LYQMEQIRRE HPDLVLYNGY DEIFASGLLA GADGGIGSTY NIMGWRYQGI VKALKEGDIQ TAQKLQTECN KVIDLLIKTG VFRGLKTVLH YMDVSVPLC RKPFQPVDEK YLPELKALAQ QLMQERG

**Expression System** E. coli

**Purity** > 95% by SDS-PAGE.

**Conjugation** Unconjugated

**Note**

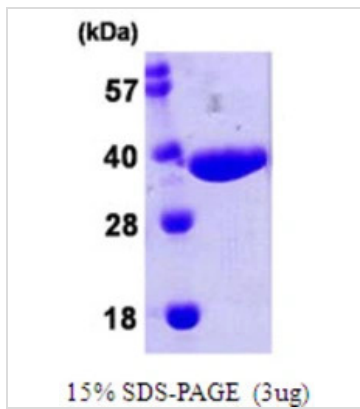
For laboratory research use only. Not for any clinical, therapeutic, or diagnostic use in humans or animals. Not for animal or human consumption.

Purchasers shall not, and agree not to enable third parties to, analyze, copy, reverse engineer or otherwise attempt to determine the structure or sequence of the product.



For full product information, images and publications, please visit our [website](#).

## DATA IMAGES

**GTX57487-pro Image**

3 $\mu$ g nanA protein (GTX57487-pro) by SDS-PAGE under reducing condition and visualized by coomassie blue stain.



For full product information, images and publications, please visit our [website](#).