

E. coli map protein, His tag

Cat. No. GTX57488-pro

Species	E. coli
---------	---------

Package	100 µg
---------	--------

Applications

Observed MW (kDa)	29 kDa.
-------------------	---------

Properties

Form	Liquid
------	--------

Buffer	20mM Tris-HCl, 10% Glycerol, 2mM DTT
--------	--------------------------------------

Preservative	No preservatives
--------------	------------------

Storage	Store as concentrated solution. Centrifuge briefly prior to opening vial. For short-term storage (1-2 weeks), store at 4°C. For long-term storage, aliquot and store at -20°C or below. Avoid multiple freeze-thaw cycles.
---------	--

Concentration	1 mg/ml (Please refer to the vial label for the specific concentration.)
---------------	--

Region/Sequence	Full length protein, N-terminal His-Tag; MGSSHHHHHH SSGLVPRGSH MAISIKTPED IEKMRVAGRL AAEVLEMI EP YVKPGVSTGE LDRICNDYIV NEQHVSACL GYHGYPKVC ISINEWCHG IPDDAKLLKD GDIVNIDVTV IKDGFHGDTS KMFIVGKPTI MGERLCRITQ ESYLALRMV KPGINLREIG AAIQKFVEAE GFSVREYCG HGIGRGFHEE PQVLHYDSRE TNVVLKPGMT FTIEPMVNAG KKEIRTMKDG WTVKTKDRSL SAQYEHTIV TDNGCEITL RKDDTIPAI SHDE
-----------------	--

Expression System	E. coli
-------------------	---------

Purity	> 90% by SDS-PAGE.
--------	--------------------

Conjugation	Unconjugated
-------------	--------------

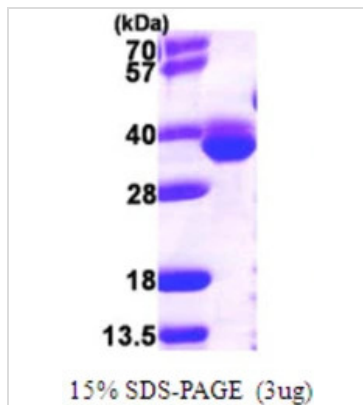
Note	For laboratory research use only. Not for any clinical, therapeutic, or diagnostic use in humans or animals. Not for animal or human consumption.
------	---

Note	Purchasers shall not, and agree not to enable third parties to, analyze, copy, reverse engineer or otherwise attempt to determine the structure or sequence of the product.
------	---



For full product information, images and publications, please visit our [website](#).

DATA IMAGES



GTX57488-pro Image

3μg map protein (GTX57488-pro) by SDS-PAGE under reducing condition and visualized by coomassie blue stain.



For full product information, images and publications, please visit our [website](#).