

E. coli glpE protein, His tag

Cat. No. GTX57489-pro

Species E. coli**Package**
100 µg

Applications

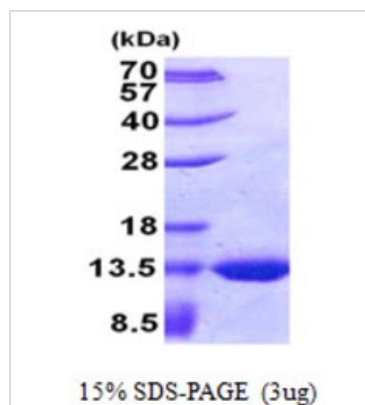
Observed MW (kDa) 12 kDa.

Properties

Form Liquid**Buffer** 20mM Tris-HCl, 10% Glycerol**Preservative** No preservatives**Storage** Store as concentrated solution. Centrifuge briefly prior to opening vial. For short-term storage (1-2 weeks), store at 4°C. For long-term storage, aliquot and store at -20°C or below. Avoid multiple freeze-thaw cycles.**Concentration** 0.5 mg/ml (Please refer to the vial label for the specific concentration.)**Region/Sequence** Full length protein, N-terminal His-Tag; MGSSHHHHHH SSGLVPRGSH MGSMDQFECI NVADAHQKLQ EKEAVLVDIR DPQSFAMGHA VQAFHLTNDT LGAFMRDNDP DTPVMVMCYH GNSSKGAAQY LLQQGYDVVY SIDGGFEAWQ RQFPAEVAYG A**Expression System** E. coli**Purity** > 95% by SDS-PAGE.**Conjugation** Unconjugated**Note** For laboratory research use only. Not for any clinical, therapeutic, or diagnostic use in humans or animals. Not for animal or human consumption.

Purchasers shall not, and agree not to enable third parties to, analyze, copy, reverse engineer or otherwise attempt to determine the structure or sequence of the product.

DATA IMAGES



GTX57489-pro Image

3µg glpE protein (GTX57489-pro) by SDS-PAGE under reducing condition and visualized by coomassie blue stain.

For full product information, images and publications, please visit our [website](https://www.genetex.com).