

# E. coli melA protein, His tag

**Cat. No. GTX57495-pro**
**Species** E. coli

**Package**  
50 µg

**Applications**
**Observed MW (kDa)** 51 kDa.

**Properties**
**Form** Liquid

**Buffer** 20mM Tris-HCl, 100mM NaCl, 10% Glycerol, 1mM DTT

**Preservative** No preservatives

**Storage** Store as concentrated solution. Centrifuge briefly prior to opening vial. For short-term storage (1-2 weeks), store at 4°C. For long-term storage, aliquot and store at -20°C or below. Avoid multiple freeze-thaw cycles.

**Concentration** 1 mg/ml (Please refer to the vial label for the specific concentration.)

**Region/Sequence**

Full length protein, N-terminal His-Tag; MGSSHHHHHH SSSLVPRGSH MGSMMMSAPKI TFIGAGSTIF VKNILGDVFH  
 REALKTAHIA LMDIDPTRLE ESHIVVRKLM DSAGASGKIT CHTQQKEALE DADFVWVAFQ IGGYECTVT DFEVCKRHGL  
 EQTIADTLGP GGIMRALRTI PHLWQICEDM TEVCPDATML NYVNPAMMNT WAMYARYPHI KQVGLCHSVQ GTAEELARDL  
 NIDPATLRYR CAGINHMAFY LELERKTADG SYVNLPELL AAYEAGQAPK PNIHGNTRCQ NIVRYEMFKK LGYFVTESSE  
 HFAEYTPWFI KPGREDLIER YKVPLDEYPK RCVEQLANWH KELEEYKKAS RIDIKPSREY ASTIMNAIWT GEPSVIYGNV RNDGLIDNLP  
 QGCCVEVAQL VDANGIQPTK VGTLP SHLAA LMQTNINVT LLTEAILTEN RDRVYHAAMM DPHTAAVLGI DEIYALVDDL  
 IAAHGDWLPG WLHR

**Expression System** E. coli

**Purity** > 90% by SDS-PAGE.

**Conjugation** Unconjugated

**Note**

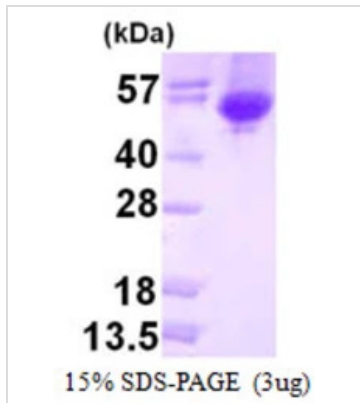
For laboratory research use only. Not for any clinical, therapeutic, or diagnostic use in humans or animals. Not for animal or human consumption.

Purchasers shall not, and agree not to enable third parties to, analyze, copy, reverse engineer or otherwise attempt to determine the structure or sequence of the product.



For full product information, images and publications, please visit our [website](#).

## DATA IMAGES

**GTX57495-pro Image**

3 $\mu$ g melA protein (GTX57495-pro) by SDS-PAGE under reducing condition and visualized by coomassie blue stain.



For full product information, images and publications, please visit our [website](#).