

E. coli groL protein

Cat. No. GTX57497-pro

Species	E. coli
----------------	---------

Package	100 µg
----------------	--------

Applications

Observed MW (kDa)	57 kDa.
--------------------------	---------

Properties

Form	Liquid
-------------	--------

Buffer	25mM Tris-HCl, 100mM NaCl, 10% Glycerol, 5mM DTT
---------------	--------------------------------------------------

Preservative	No preservatives
---------------------	------------------

Storage	Store as concentrated solution. Centrifuge briefly prior to opening vial. For short-term storage (1-2 weeks), store at 4°C. For long-term storage, aliquot and store at -20°C or below. Avoid multiple freeze-thaw cycles.
----------------	----------------------------------------------------------------------------------------------------------------------------------------------------------------------------------------------------------------------------

Concentration	1 mg/ml (Please refer to the vial label for the specific concentration.)
----------------------	--------------------------------------------------------------------------

Region/Sequence

Full length protein, MAAKDVKFGN DARVKMLRGV NVLADAVKVT LGPKGRNVWL DKSFSGAPTIT KDGVSVAREI ELEDKFENMG AQMVKEVASK ANDAAGDGT TATVLAQAI TEGLKAVAAG MNPMDLKRG DKAVTAAVEE LKALSVPDSD SKAIAQVGTI SANSDETVGK LIAEAMDKVG KEGVITVEDG TGLQDELVDV EGMQFDRGYL SPYFINKPET GAVELESPFI LLADKKISNI REMLPVLEAV AKAGKPLLI AEDVEGEALA TLVWNTMRGI VKVAVKAPG FGDRRKAMLQ DIATLTGGTV ISEEIGMELE KATLEDLQQA KRVWINKDIT TIIDGVGEEA AIQGRVAQIR QQIEEATSDY DREKLQERVA KLAGGVAVIK VGAATEVEMK EKKARVEDAL HATRAAVEEG VWAGGGVALI RVASKLADLR GQNEQNVGI KVALRAMEAP LRQIVLNCGE EPSVWANTVK GGDGNYGYNA ATEEYGNMID MGILDPTKVT RSALQYAASV AGLMITTECM VTDLPKNDAA DLGAAGGMGG MGGMGGMM

Expression System	E. coli
--------------------------	---------

Purity	> 95% by SDS-PAGE.
---------------	--------------------

Conjugation	Unconjugated
--------------------	--------------

Note

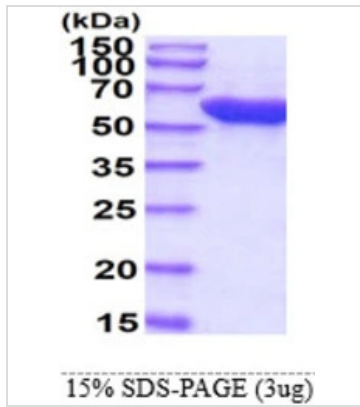
For laboratory research use only. Not for any clinical, therapeutic, or diagnostic use in humans or animals. Not for animal or human consumption.

Purchasers shall not, and agree not to enable third parties to, analyze, copy, reverse engineer or otherwise attempt to determine the structure or sequence of the product.



For full product information, images and publications, please visit our [website](#).

DATA IMAGES

**GTX57497-pro Image**

3 μ g groL protein (GTX57497-pro) by SDS-PAGE under reducing condition and visualized by coomassie blue stain.



For full product information, images and publications, please visit our [website](#).