

alpha B Crystallin antibody [2E8]

Cat. No. GTX57544

Host	Mouse
Clonality	Monoclonal
Isotype	IgG2b
Applications	WB, ICC/IF
Reactivity	Human, Mouse

Package
100 µl

Applications

Application Note

*Optimal dilutions/concentrations should be determined by the researcher.

Suggested dilution	Recommended dilution
WB	1:500-1:2000
ICC/IF	Assay dependent

Not tested in other applications.

Calculated MW 20 kDa. ([Note](#))**Product Note** The clone 2E8 is specific for crystallin alpha B, but does not cross crystallin alpha A.

Properties

Form	Liquid
Buffer	PBS, 10% Glycerol
Preservative	0.02% Sodium azide
Storage	Store as concentrated solution. Centrifuge briefly prior to opening vial. For short-term storage (1-2 weeks), store at 4°C. For long-term storage, aliquot and store at -20°C or below. Avoid multiple freeze-thaw cycles.
Concentration	1 mg/ml (Please refer to the vial label for the specific concentration.)
Immunogen	The clone 2E8 is derived from hybridization of mouse SP4/O myeloma cells with spleen cells from BALB/c mice immunized with recombinant Human Crystallin alpha B.
Purification	Protein G Purified
Conjugation	Unconjugated

Note

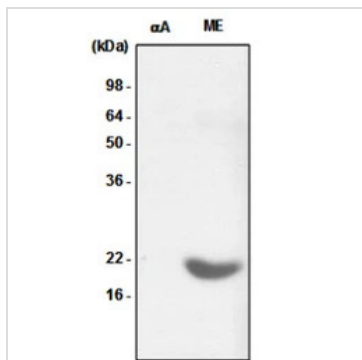
For laboratory research use only. Not for any clinical, therapeutic, or diagnostic use in humans or animals. Not for animal or human consumption.

Purchasers shall not, and agree not to enable third parties to, analyze, copy, reverse engineer or otherwise attempt to determine the structure or sequence of the product.



For full product information, images and publications, please visit our [website](#).

DATA IMAGES

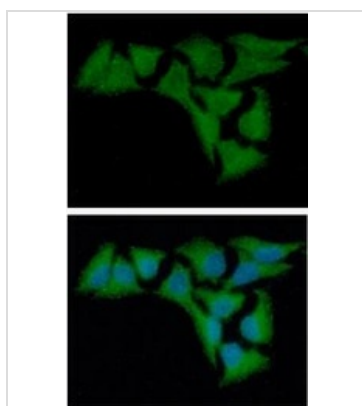


GTx57544 WB Image

WB analysis of various samples using GTx57544 alpha B Crystallin antibody.

Samples : Recombinant Human crystallin alpha A (alphaA) and Mouse eye tissue lysate (ME)

Dilution : 1:1000



GTx57544 ICC/IF Image

ICC/IF analysis of HeLa cells using GTx57544 alpha B Crystallin antibody.

Blue: DAPI

Green: Primary antibody

Dilution: 1:100



For full product information, images and publications, please visit our [website](https://www.genetex.com).