

FADD antibody [J1D2]

Cat. No. GTX57546

Host	Mouse
Clonality	Monoclonal
Isotype	IgG2b
Application	WB, ICC/IF, IHC-P
Reactivity	Human, Mouse

Package
100 µl

APPLICATION

Application Note

*Optimal dilutions/concentrations should be determined by the researcher.

Suggested dilution	Recommended dilution
WB	1:1000-1:2000
ICC/IF	Assay dependent
IHC-P	1:50-1:100

Not tested in other applications.

Calculated MW 23 kDa. ([Note](#))

PROPERTIES

Form	Liquid
Buffer	PBS, 10% Glycerol
Preservative	0.02% Sodium azide
Storage	Store as concentrated solution. Centrifuge briefly prior to opening vial. For short-term storage (1-2 weeks), store at 4°C. For long-term storage, aliquot and store at -20°C or below. Avoid multiple freeze-thaw cycles.
Concentration	1 mg/ml (Please refer to the vial label for the specific concentration.)
Immunogen	The clone J1D2 is derived from hybridization of mouse F2 myeloma cells with spleen cells from BALB/c mice immunized with a recombinant human FADD protein.
Purification	Protein G Purified
Conjugation	Unconjugated

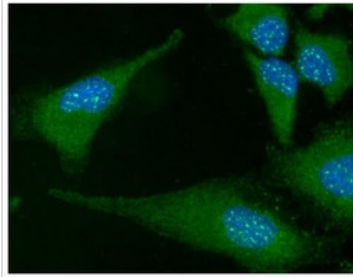
Note

For laboratory research use only. Not for any clinical, therapeutic, or diagnostic use in humans or animals. Not for animal or human consumption.

Purchasers shall not, and agree not to enable third parties to, analyze, copy, reverse engineer or otherwise attempt to determine the structure or sequence of the product.



For full product information, images and publications, please visit our [website](#).

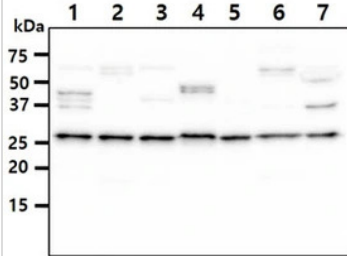
DATA IMAGES

GTX57546 ICC/IF Image

ICC/IF analysis of HeLa cells using GTX57546 FADD antibody.

Blue: DAPI

Green: Primary antibody

Dilution: 1:100


GTX57546 WB Image

WB analysis of various samples using GTX57546 FADD antibody.

Lane 1 : HeLa whole cell lysate

Lane 2 : Raw264.7 whole cell lysate

Lane 3 : MCF-7 whole cell lysate

Lane 4 : A431 whole cell lysate

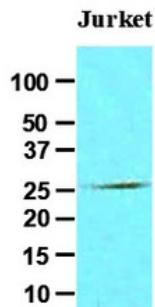
Lane 5 : Ramos whole cell lysate

Lane 6 : Raji whole cell lysate

Lane 7 : Balb/3T3 whole cell lysate

Loading : 40 µg

Dilution : 1:500


GTX57546 WB Image

WB analysis of Jurkat whole cell lysate using GTX57546 FADD antibody.

Loading : 30 µg

Dilution : 1:500



For full product information, images and publications, please visit our [website](https://www.genetex.com).