

# GSK3 beta antibody [1F7]

**Cat. No. GTX57548**

<b>Host</b>	Mouse
<b>Clonality</b>	Monoclonal
<b>Isotype</b>	IgG1
<b>Applications</b>	WB, ICC/IF, FCM
<b>Reactivity</b>	Human

**Package**  
100 µl

## Applications

### Application Note

\*Optimal dilutions/concentrations should be determined by the researcher.

Suggested dilution	Recommended dilution
WB	1:1000-1:3000
ICC/IF	Assay dependent
FCM	Assay dependent

Not tested in other applications.

**Calculated MW** 47 kDa. ( [Note](#) )

## Properties

<b>Form</b>	Liquid
<b>Buffer</b>	PBS, 10% Glycerol
<b>Preservative</b>	0.02% Sodium azide
<b>Storage</b>	Store as concentrated solution. Centrifuge briefly prior to opening vial. For short-term storage (1-2 weeks), store at 4°C. For long-term storage, aliquot and store at -20°C or below. Avoid multiple freeze-thaw cycles.
<b>Concentration</b>	1 mg/ml (Please refer to the vial label for the specific concentration.)
<b>Immunogen</b>	The clone 1F7 is derived from hybridization of mouse SP2/O myeloma cells with spleen cells from BALB/c mice immunized with a recombinant human GSK5beta protein.
<b>Purification</b>	Protein G Purified
<b>Conjugation</b>	Unconjugated

### Note

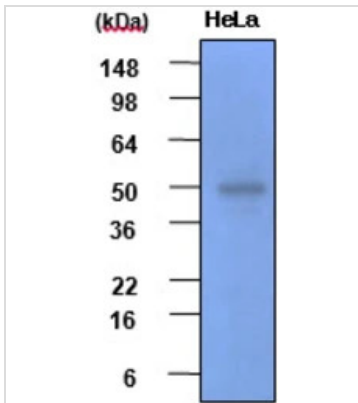
For laboratory research use only. Not for any clinical, therapeutic, or diagnostic use in humans or animals. Not for animal or human consumption.

Purchasers shall not, and agree not to enable third parties to, analyze, copy, reverse engineer or otherwise attempt to determine the structure or sequence of the product.



For full product information, images and publications, please visit our [website](#).

## DATA IMAGES

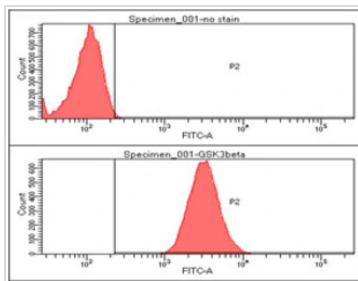


### GTX57548 WB Image

WB analysis of HeLa whole cell lysate using GTX57548 GSK3 beta antibody.

Loading : 30 µg

Dilution : 1:2000



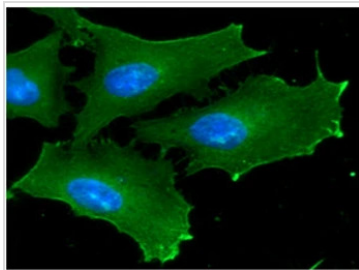
### GTX57548 FCM Image

FACS analysis of HeLa cells using GTX57548 GSK3 beta antibody.

Cell Number: 1 x 10<sup>6</sup> cells

Upper panel : negative control, Lower panel: Primary antibody

Antibody amount: 2-5 µg



### GTX57548 ICC/IF Image

ICC/IF analysis of HeLa cells using GTX57548 GSK3 beta antibody.

Blue: DAPI

Green: Primary antibody

Dilution: 1:100



For full product information, images and publications, please visit our [website](#).