

14-3-3 epsilon antibody [AT4F8]

Cat. No. GTX57563

Host	Mouse
Clonality	Monoclonal
Isotype	IgG2b
Applications	WB, ICC/IF
Reactivity	Human, Mouse

Package
100 µl

Applications

Application Note

*Optimal dilutions/concentrations should be determined by the researcher.

Suggested dilution	Recommended dilution
WB	Assay dependent
ICC/IF	Assay dependent

Not tested in other applications.

Calculated MW 29 kDa. ([Note](#))

Product Note

Based on internal testing result, this antibody does not cross react with human 14-3-3 zeta, human 14-3-3 beta, human 14-3-3 eta, human 14-3-3 gamma, human 14-3-3 sigma, and human 14-3-3 tau protein.

Properties

Form	Liquid
Buffer	PBS, 10% Glycerol
Preservative	0.02% Sodium azide
Storage	Store as concentrated solution. Centrifuge briefly prior to opening vial. For short-term storage (1-2 weeks), store at 4°C. For long-term storage, aliquot and store at -20°C or below. Avoid multiple freeze-thaw cycles.
Concentration	1 mg/ml (Please refer to the vial label for the specific concentration.)
Immunogen	The clone AT4F8 is derived from hybridization of mouse F0 myeloma cells with spleen cells from BALB/c mice immunized with a recombinant human 14-3-5 epsilon protein.
Purification	Protein A Purified
Conjugation	Unconjugated



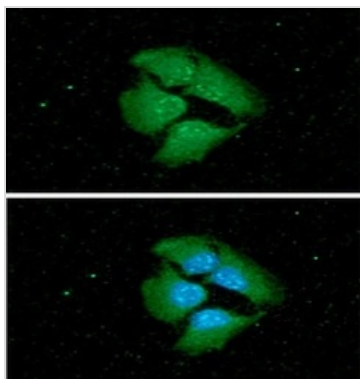
For full product information, images and publications, please visit our [website](#).

For laboratory research use only. Not for any clinical, therapeutic, or diagnostic use in humans or animals. Not for animal or human consumption.

Note

Purchasers shall not, and agree not to enable third parties to, analyze, copy, reverse engineer or otherwise attempt to determine the structure or sequence of the product.

DATA IMAGES



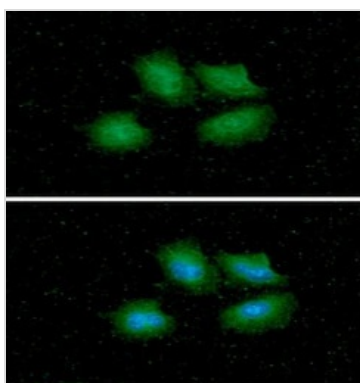
GTx57563 ICC/IF Image

ICC/IF analysis of HeLa cells using GTx57563 14-3-3 epsilon antibody.

Blue: DAPI

Green: Primary antibody

Dilution: 1:100



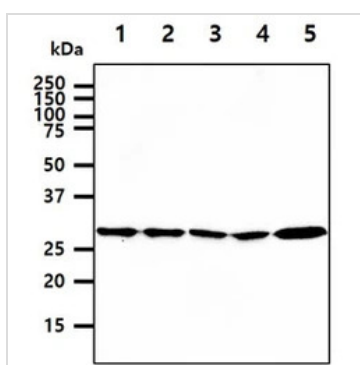
GTx57563 ICC/IF Image

ICC/IF analysis of A549 cells using GTx57563 14-3-3 epsilon antibody.

Blue: DAPI

Green: Primary antibody

Dilution: 1:100



GTx57563 WB Image

WB analysis of various samples using GTx57563 14-3-3 epsilon antibody.

Lane 1 : HeLa whole cell lysate

Lane 2 : Jurkat whole cell lysate

Lane 3 : 293T whole cell lysate

Lane 4 : A549 whole cell lysate

Lane 5 : Mouse Brain tissue lysate

Loading : 40 µg

Dilution : 1:1000



For full product information, images and publications, please visit our [website](#).