

Cathepsin S antibody [AT1F9]

Cat. No. GTX57592

Host	Mouse
Clonality	Monoclonal
Isotype	IgG2b
Applications	WB, ICC/IF
Reactivity	Human

Package
100 µl

Applications

Application Note

*Optimal dilutions/concentrations should be determined by the researcher.

Suggested dilution	Recommended dilution
WB	Recommended starting dilution is 1:500.
ICC/IF	Assay dependent

Not tested in other applications.

Calculated MW 38 kDa. ([Note](#))

Product Note Based on internal testing result, this antibody does not cross react with human CTSB, human CTSD, human CTSE, human CTSF, human CTSI, human CTSK, human CTSL, human CTSW, and human CTSZ.

Properties

Form	Liquid
Buffer	PBS, 10% Glycerol
Preservative	0.02% Sodium azide
Storage	Store as concentrated solution. Centrifuge briefly prior to opening vial. For short-term storage (1-2 weeks), store at 4°C. For long-term storage, aliquot and store at -20°C or below. Avoid multiple freeze-thaw cycles.
Concentration	1 mg/ml (Please refer to the vial label for the specific concentration.)
Immunogen	The clone AT1F9 is derived from hybridization of mouse F2 myeloma cells with spleen cells from BALB/c mice immunized with a recombinant human CTSS protein.
Purification	Protein A Purified
Conjugation	Unconjugated



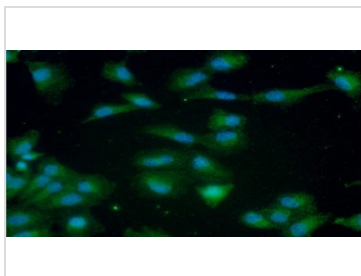
For full product information, images and publications, please visit our [website](#).

For laboratory research use only. Not for any clinical, therapeutic, or diagnostic use in humans or animals. Not for animal or human consumption.

Note

Purchasers shall not, and agree not to enable third parties to, analyze, copy, reverse engineer or otherwise attempt to determine the structure or sequence of the product.

DATA IMAGES

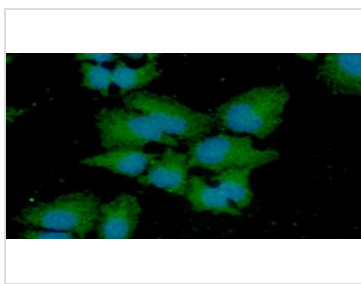
**GTX57592 ICC/IF Image**

ICC/IF analysis of A549 cells using GTX57592 Cathepsin S antibody.

Blue: DAPI

Green: Primary antibody

Dilution: 1:100

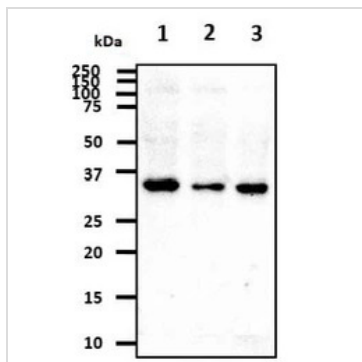
**GTX57592 ICC/IF Image**

ICC/IF analysis of HeLa cells using GTX57592 Cathepsin S antibody.

Blue: DAPI

Green: Primary antibody

Dilution: 1:100

**GTX57592 WB Image**

WB analysis of various samples using GTX57592 Cathepsin S antibody.

Lane 1 : HeLa whole cell lysate

Lane 2 : U87-MG whole cell lysate

Lane 3 : A549 whole cell lysate

Loading : 40 μ g

Dilution : 1:500



For full product information, images and publications, please visit our [website](#).